

Question 1 (6 marks)

Globalization can have positive and negative impacts.

Question 1a (2 marks)

Identify two positive impacts of globalization.

B *I* ↵ ⇨ U x_2 x^2 $\frac{1}{2}$ \div $:=$ Ω \sqrt  Styles

Words: 0





Question 2 (8 marks)

3

Look at **Source A** and answer the question that follows.



Welcome to today's program. We are starting with a story on food insecurity affecting Tajikistan. Food insecurity is one of the greatest challenges we face as our global population continues to rise.

Of nearly 8 billion people worldwide, approximately 800 million people suffer from hunger every day. They often lack access to staple foods such as maize, rice, and wheat. This is in part due to the impacts of globalization.

Globalization has made it cheaper for many countries to import more food, instead of growing what they need. This reliance on other countries for food leaves them vulnerable to changes in the countries they import from.

Last month, I visited Tajikistan, a country in Central Asia.

In Tajikistan over 60 % of the country's population are employed in the agricultural sector.

However, agriculture remains largely underdeveloped with poor technologies, and the country depends on imports to cover 75 % of its food needs.

47 % of people in Tajikistan live on less than \$1.33 a day. They have the highest rate of childhood malnutrition in Europe and Central Asia at 18 %.

And now, onto our next story.

The government of Tajikistan is concerned that they are overly reliant on food imports from other countries. Situations such as war in other countries can make it harder for the country to import the foods needed to feed their population.

The government has employed a research consultant to investigate ways the country could increase food security and the health of their population.

The consultant's action plan is shown below.

Research question: How can Tajikistan reduce their reliance on other countries to increase their food security?

Stage of action plan	Status	Dates	Notes
Stage 1: Research sub-questions	Launched	Week 1: Planning stage	<p>Sub-question 1: Is Tajikistan overly reliant on other countries for their food imports?</p> <p>Sub-question 2: Why are Tajikistan's farming technologies so poor?</p> <p>Sub-question 3: Which foods are imported and where do they come from?</p> <p>Sub-question 4: What percentage of the population in Tajikistan are vegan?</p>
Stage 2: Secondary data collection	In progress	Week 2–4: Research stage A	<p>Find data on:</p> <ol style="list-style-type: none"> 1. Average caloric intake per person in Tajikistan and globally 2. Types of crops grown in and exported from Tajikistan 3. Types of farming practices currently used 4. Causes of malnutrition

Stage 2: Secondary data collection	In progress	Week 2–4: Research stage A	<p>Find data on:</p> <ol style="list-style-type: none"> 1. Average caloric intake per person in Tajikistan and globally 2. Types of crops grown in and exported from Tajikistan 3. Types of farming practices currently used 4. Causes of malnutrition
Stage 3: Primary data collection	Not started	Week 5–6: Research stage B	<ol style="list-style-type: none"> 1. Interview five farmers about their farming practices and how much money they make from their crops
Stage 4: Prepare presentation and recommendations for government	Not started	Week 7–8: Findings stage	Design a presentation on PowerPoint using the secondary data on caloric intake, crops grown and exports. Mention what farmers say in the interviews.

Evaluate the action plan.

B *I* ↶ ↷ U x₂ x² ∑ ∏ ∫ √ Ω ∞ ☰ Styles



Question 3 (12 marks)



A local government wants to understand the social or environmental impacts of globalization on trade and exchange in their country.

The government asked you as a research consultant to design an action plan to investigate the social **or** environmental impacts on a case study of your choice. Use the following statement of inquiry to inform your action plan.

Statement of inquiry:

Local and global processes are interconnected as a result of globalization, creating challenges and opportunities.



Question 3c (2 marks)

Identify two reliable sources you would use in your investigation.

B *I* ↶ ↷ U x_2 x^2 \int ∇ \equiv Ω \sqrt Styles ∇

Words: 0





Question 3d (4 marks)

Explain how **one** source identified in part (c) will help you answer your research question.

B *I* ↶ ↷ U x_2 x^2 \int ∇ \div Ω \sqrt Styles ∇

Words: 0





Question 4 (18 marks)

You have been invited to speak on a student-led podcast. The audience of the podcast will be students in MYP schools from around the world.

You are in the podcast studio to record the episode. The host has introduced you in the following way:



Podcast

Transcript

Host: “Welcome to our student-led podcast where we are exploring the global context **scientific and technical innovation**. Our guest on the show today is a fellow MYP5 Geography student. We will be speaking about the impact humans have on their environment(s). Thanks for joining us.”

Podcast

Transcript

You: "Thanks for having me!"

Host: "The big question we'd like you to answer for our listeners today: how are humans using scientific and technical innovations to harm **or** to protect biomes?"



Question 5 (6 marks)



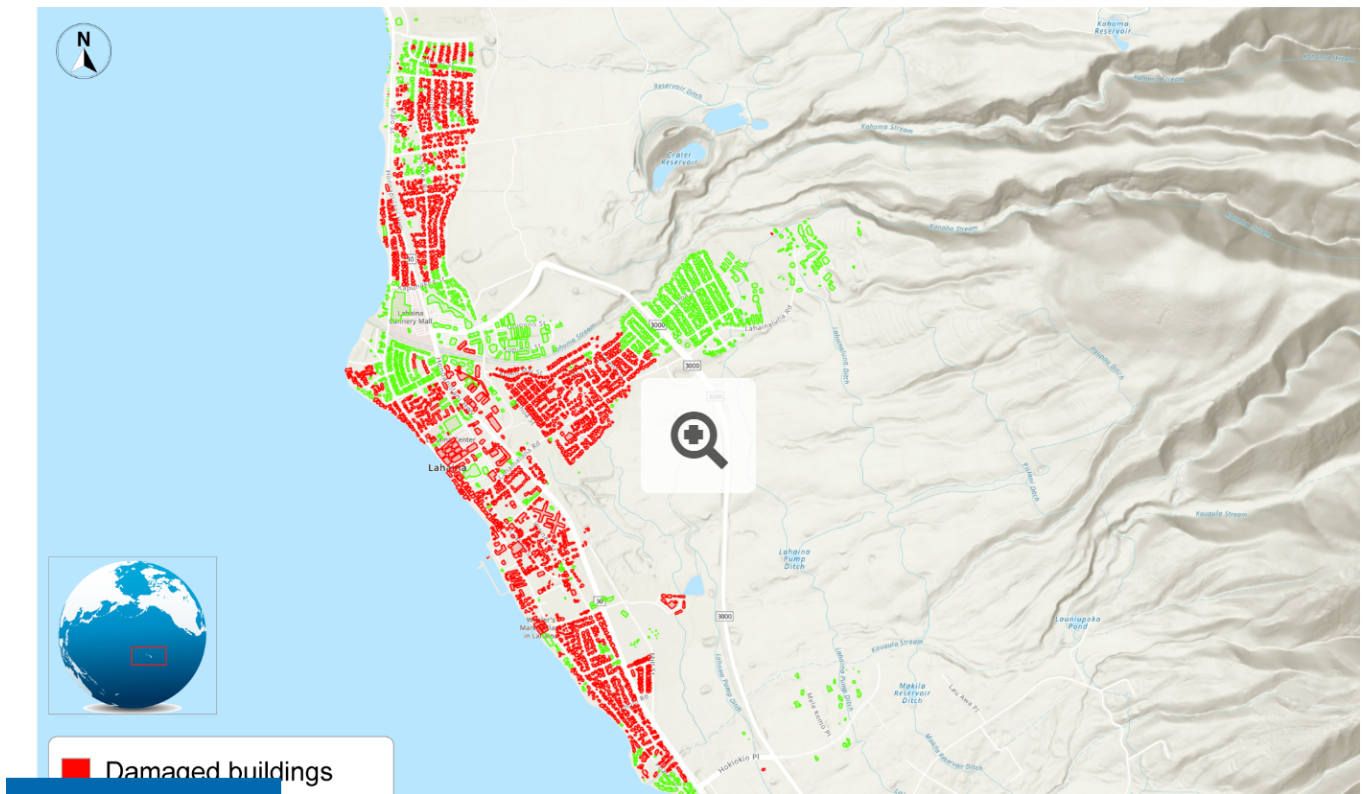
In 2023, wildfires in Hawaii destroyed much of a town called Lahaina. The death toll was more than 100 people and forced thousands to evacuate.

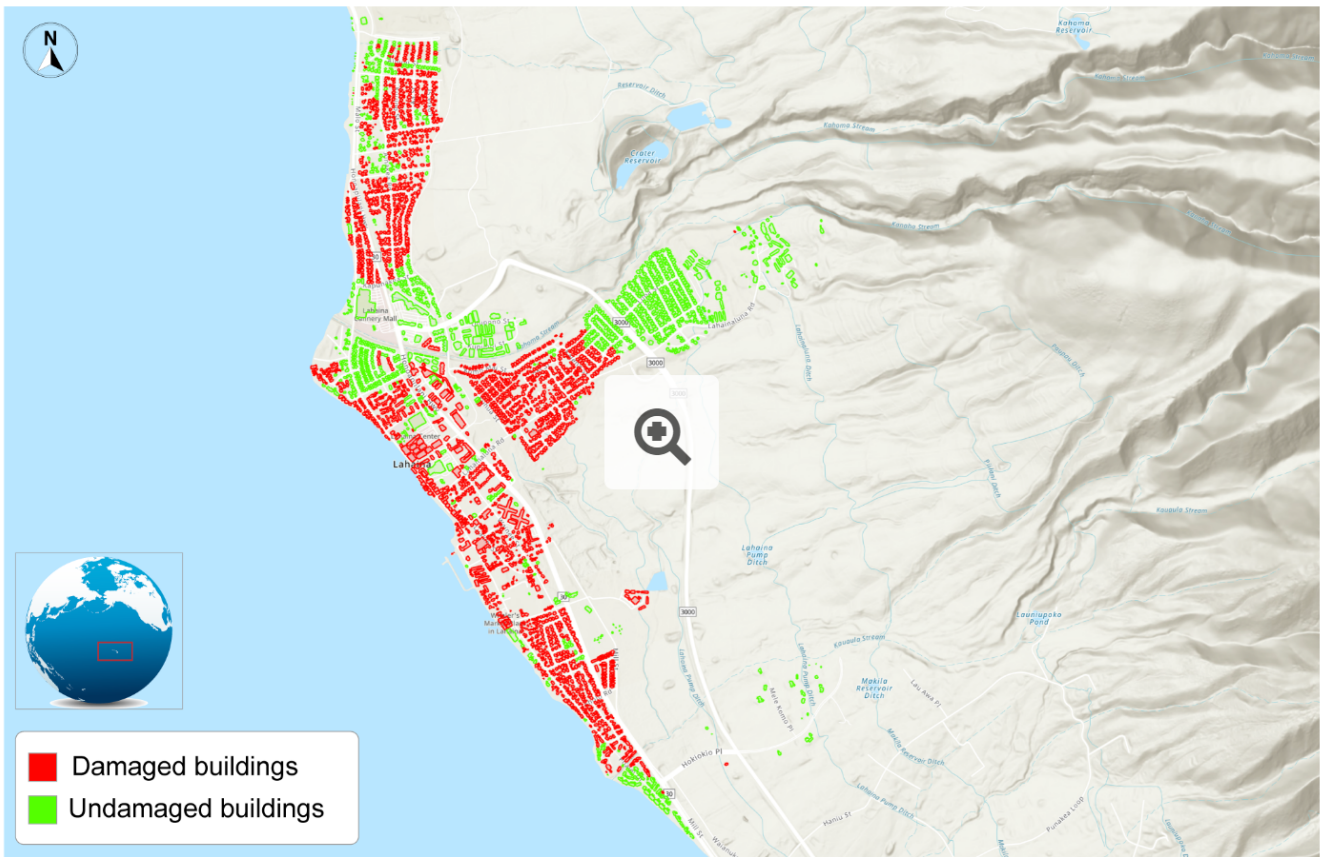
A non-governmental organization (NGO) called Giving Hands wants to help survivors of the fire. Their goal is to provide food and emergency shelter to those who need it most. They have contacted you to get your opinion on how useful **Source B** could be for achieving their goal.

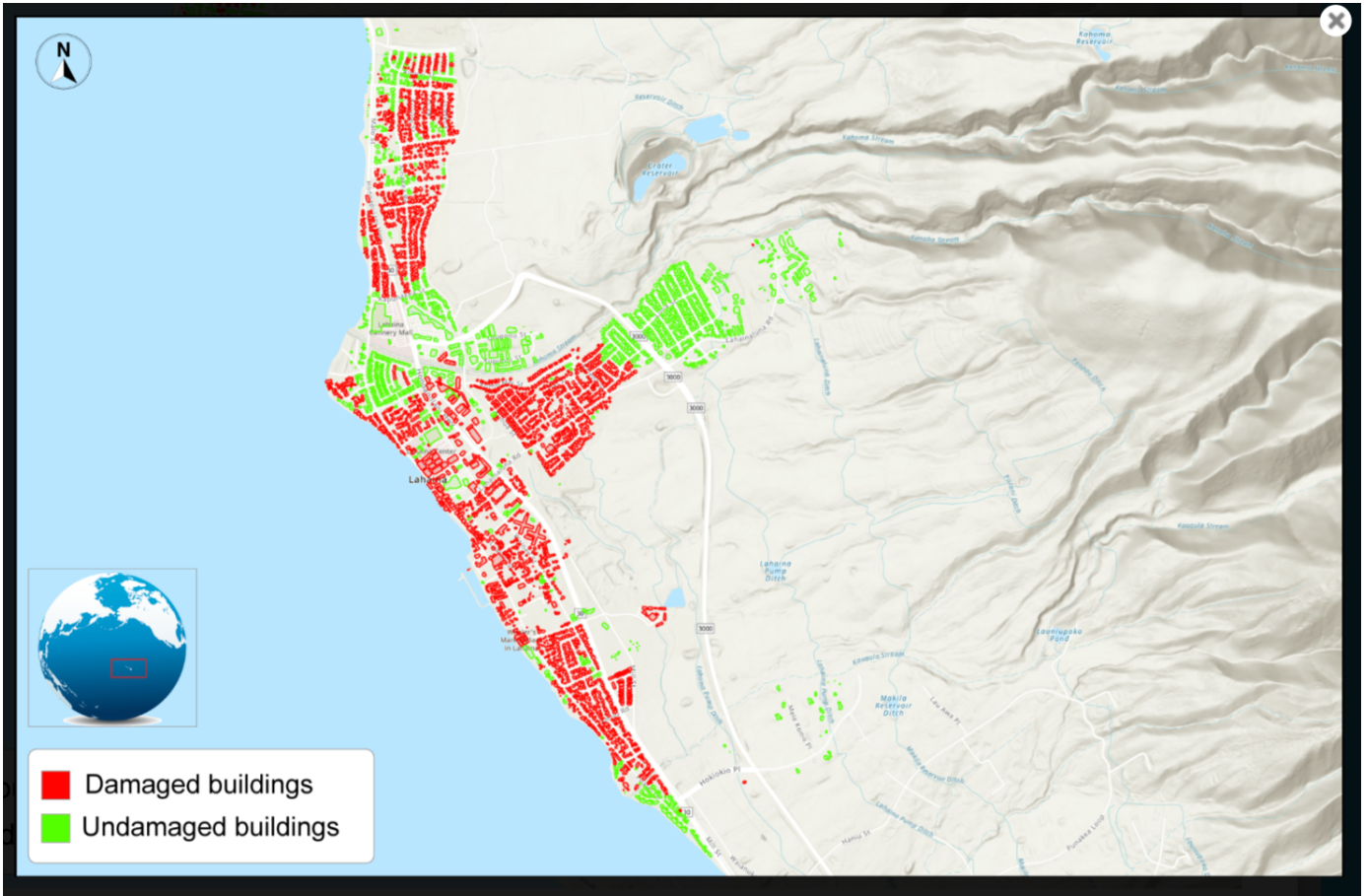
Look at **Source B** to answer the questions that follow.

Source B

A map showing the damage caused by the wildfire to the town of Lahaina









Question 5b (3 marks)

Explain one reason why **Source B** might not provide enough information for the NGO's project.

B *I* ↶ ↷ U \times_2 \times^2 $\frac{1}{2} =$ $\frac{1}{3} =$ Ω $\sqrt{\quad}$ Styles

Words: 0





Question 6 (6 marks)



Months after the wildfires, a member of the Lahaina town council addressed the residents about preparing for possible natural disasters in the future.

Click on **Source C** to listen to the speech and answer the question below.



Audio

Transcript

“As a town, we need to be prepared for all natural disasters. As you know, Hawaii experiences different natural hazards including tsunamis, hurricanes, volcanic eruptions, earthquakes, and wildfires. This is why we have put in place the following strategies:

1. Early warning system

Our town will use an early warning system to alert residents of any emergency situations. The

Audio

Transcript

1. Early warning system

Our town will use an early warning system to alert residents of any emergency situations. The police and fire department will communicate updates and instructions through social media.

2. Safe zones

Evacuation routes will be clearly marked to help residents reach safe zones and shelters equipped with emergency supplies. We will also be practicing regular evacuation drills and

[Audio](#)

[Transcript](#)

2. Safe zones

Evacuation routes will be clearly marked to help residents reach safe zones and shelters equipped with emergency supplies. We will also be practicing regular evacuation drills and educational campaigns.

We believe that these strategies will increase the safety of our residents. Thank you for listening.”

An 80-year-old resident of Lahaina was listening to the speech. With reference to the proposed strategies, **analyse** the effectiveness of the **two** strategies from the 80-year-old's perspective.

B *I* ↶ ↷ U x_2 x^2 \neq \equiv Ω $\sqrt{\quad}$ Styles ▼

Words: 0



