



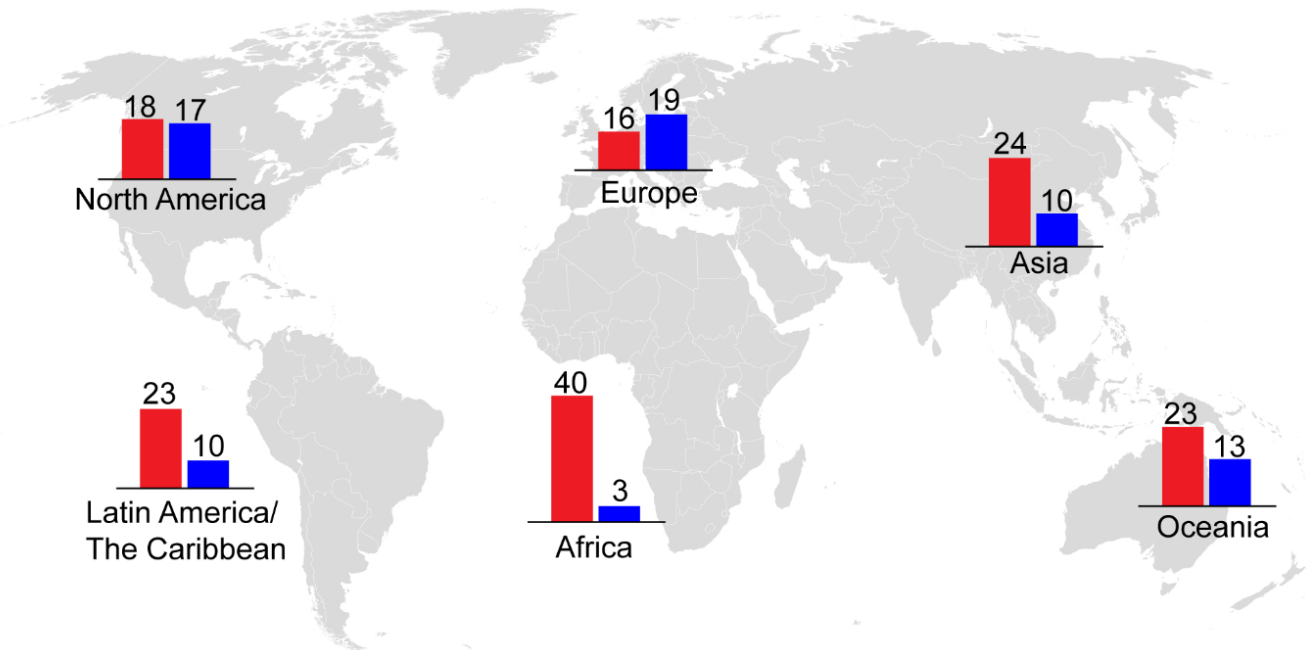
Question 1 (2 marks)

The infographic below shows population structures in 2022. Look at the infographic and answer the questions that follow.

Population Structures Around the World, by Region

Estimated share of population in stated age groups in 2022, by world region (in %)

■ Under 15 year olds ■ Over 65 year olds



Source: Population Reference Bureau



Question 1a (1 mark)

State the region with the highest percentage of over 65 year olds.

B *I* | ← → | U x_2 x^2 | ☰ ☷ | Ω Σ | Styles - | 📱



Question 1b (1 mark)

Select the population structure for the African region.


- Select ▾
- Select
- Ageing
- Stable
- Youthful



Question 2 (4 marks)

Explain one cause of ageing populations.

B *I* ← → U x_e x^e \equiv \equiv Ω Σ Styles

**Question 3** (8 marks)

In South Korea there is a growing number of people over 65 years old. A city official will investigate the impacts of the ageing population in the city so that the local government can take action.

The city official needs to present their action plan for their investigation to the local government for approval. They want you to evaluate the action plan before they submit it and have set up a video call to show it to you.

This media is interactive.



Evaluate the city official's investigation.



There are three stages to my plan as you can see in my presentation.



Stage 1: Collection of data

Stage 2: Presentation and analysis of data

Stage 3: Prepare report

Continue

< Back



I expect that I will need four weeks to conduct my research.



Collection of data

1. Interview 40 residents of nursing homes in the city
2. Identify demographic trends using census data from 2020
3. Collect data on the number of hospital admissions for 65 year olds
4. Collect income and pension data for the last year

Continue

< Back



I've already collected the death rate and population data for the city as you can see in my slide.

I am going to use spreadsheets to create graphs that will help me to analyse the data.

I'm hoping I can complete this stage in two weeks.

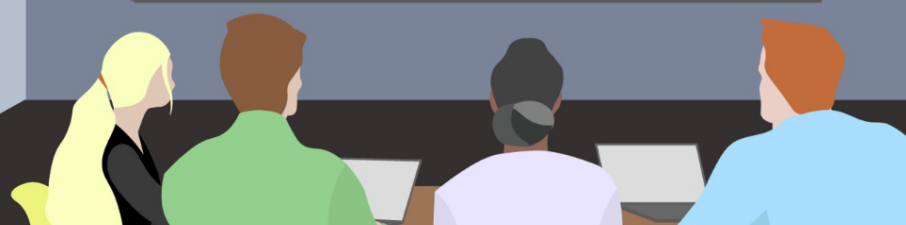


Presentation and analysis of data

- Death rate: 7.8 per 1000 people
- Population data for city: 1549500 people

Continue

< Back



Once I have collected and analysed the data, I will prepare my report. This will also take two weeks.
I will use the headings Social, Economic, Environmental and Political impacts to structure my report.
The last thing I will do is cite my sources to create a reference list.



Prepare report

Social impacts

Economic impacts

Environmental impacts

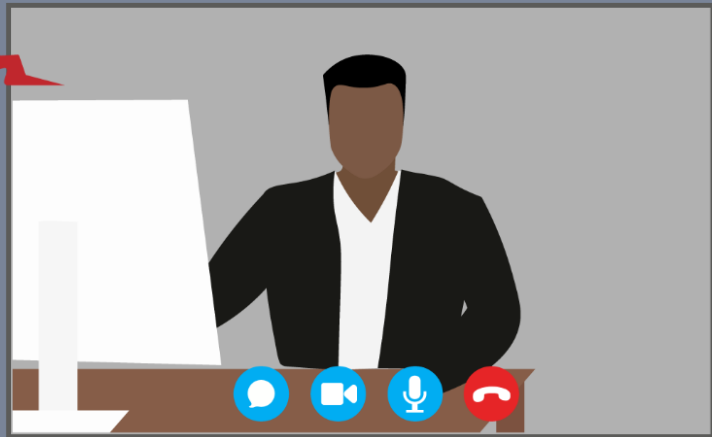
Political impacts

Continue

< Back

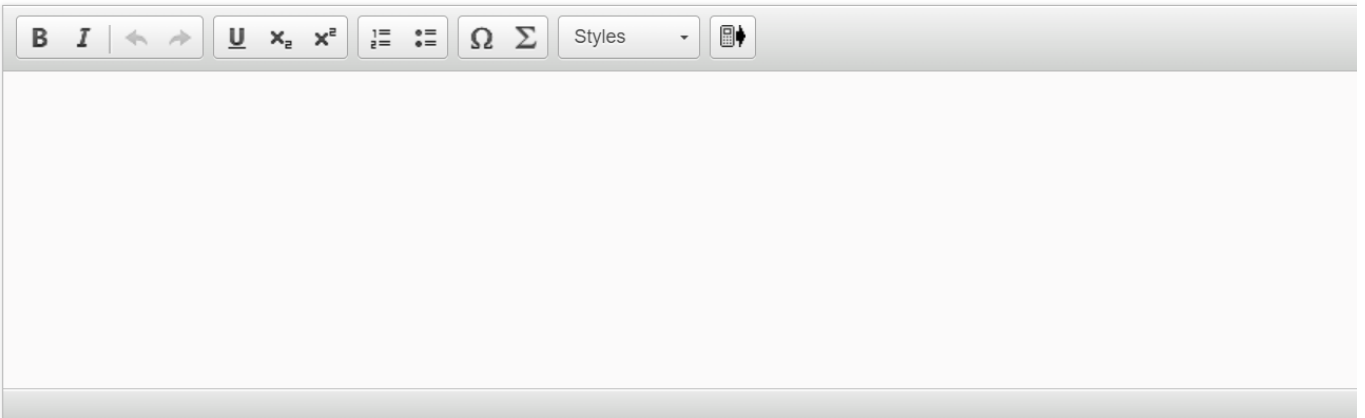


Thank you again and I look forward to receiving your evaluation.



< Back

Evaluate the city official's investigation.



A rich text editor toolbar with the following icons from left to right: Bold (B), Italic (I), Undo (left arrow), Redo (right arrow), Underline (U), Subscript (x₂), Superscript (x²), Bulleted List (three horizontal lines with a dot), Numbered List (three horizontal lines with numbers), Link (Ω), Unlink (Σ), Styles (a dropdown menu labeled "Styles"), and a mobile view icon (a smartphone with a double-headed arrow).



Question 4 (12 marks)



You are a journalist working for the Asian Development Bank and will write an article for the website. The purpose of the article is to help readers understand the role of migration in changing population structures around the world. You will formulate your investigation around the following statement of inquiry.

Statement of inquiry:

Changes in populations can be impacted by time, place and space.



Question 4a (2 marks)

Formulate a clear and focused research question based on the statement of inquiry.

B I | ← → | x₂ x² | ☰ ☷ | Ω Σ

Styles ▾



Question 4b (4 marks)

Justify how your research question will help you to understand the role that migration has in changing population structures.

B I | ← → | x₂ x² | ☰ ☷ | Ω Σ



Question 4c (2 marks)

Outline one challenge that you might face in your investigation.

B *I* | ← → | x₂ x^e | :≡ := | Ω Σ

Styles ▾ | 📄



Question 4d (2 marks)

Outline how you would attempt to overcome the challenge you outlined in part (c).

B *I* | ← → | x₂ x^e | :≡ := | Ω Σ

Styles ▾ | 📄





Question 4e (2 marks)

List two relevant individuals or groups that you would interview to help your investigation.

B *I* | ← → | U x_2 x^2 | ☰ ☷ | Ω Σ | Styles ▾ | 📄 ↕



Question 5 (18 marks)



You work for a company which extracts natural resources. Some residents have raised concerns about the sustainability of resource extraction in the local area. There will be a vote on whether to allow your company to continue extracting natural resources in the area. You must gain the support of locals so that they vote in your favour.

A community meeting has been arranged where you will give a speech. Your speech must **explain two** ways that your company sustainably extracts the natural resource(s).

Name the location and natural resource(s) being extracted:

Location:

Natural resource(s):

Write your speech here:

B *I* ← → U x_2 x^2 Styles ▾



Question 6 (6 marks)



Question 6a (2 marks)

A policy maker is researching the impact of Climate Change in Spain and they have found the map below (**Source A**).



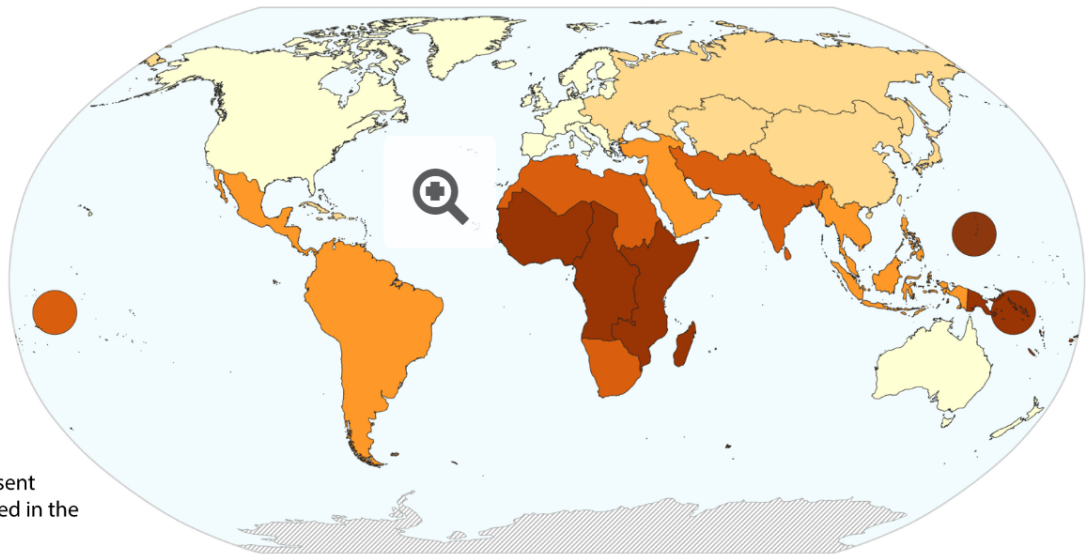
Source A

Level of Vulnerability to Climate Change in 2021

The vulnerability of a location to climate change can be measured by the extent it is negatively affected and whether it can adapt to the changes.

Level of Vulnerability

-  Very low
-  Low
-  Medium
-  High
-  Very High



The circle icons represent island countries located in the Pacific Ocean.



Question 6a (2 marks)

Outline the purpose of **Source A**.

B *I* | ← → | x₂ x² | ≡ ≡ | Ω Σ

Styles ▾ | 📄



Question 6b (2 marks)

Outline one value of **Source A** to the policy maker researching the impact of climate change in Spain.

B *I* | ← → | x₂ x² | ≡ ≡ | Ω Σ

Styles ▾ | 📄





Question 6c (2 marks)

Outline one limitation of **Source A** to the policy maker researching the impact of climate change in Spain.

Rich text editor toolbar with icons for Bold (B), Italic (I), Undo, Redo, Underline (U), Subscript (x₂), Superscript (x²), Bulleted List, Numbered List, Insert Link (Ω), Insert Table (Σ), Styles dropdown, and a mobile device icon. A tooltip labeled "Wiris Editor" is visible over the Styles dropdown.





Question 7 (6 marks)

Spain is impacted by climate change. A policy maker has created the map in **Source B** to show the risks to two cities in Spain: Barcelona and Madrid. Look at the source and answer the question that follows.

Click on the tabs below to access the following information on Madrid and Barcelona:

1. Country summary
2. Water stress
3. Fire risk
4. Risk of coastal flooding

Source B

This media is interactive

Country summary Water stress Fire risk Risk of coastal flooding

Madrid

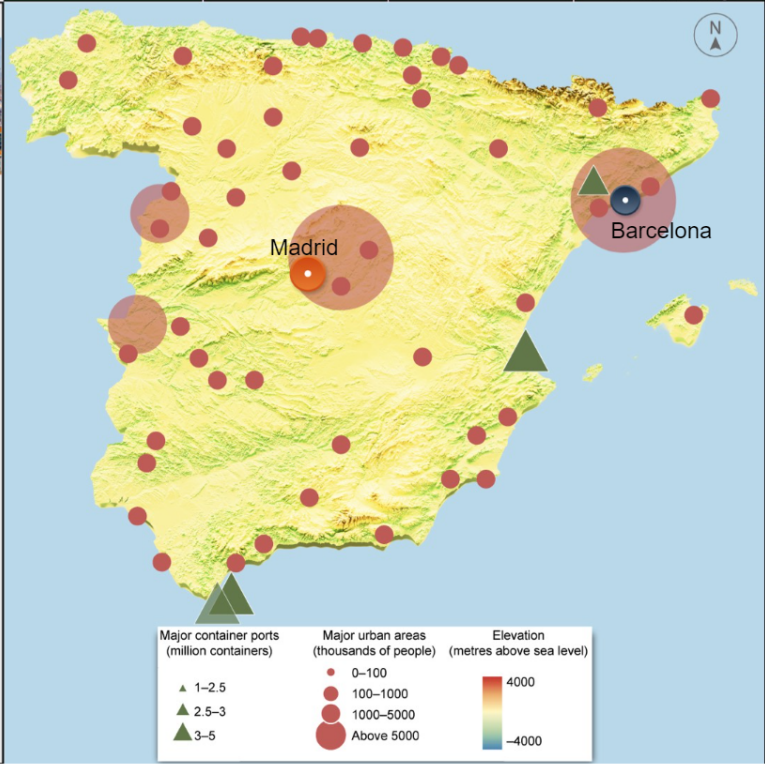


Madrid is the capital city of Spain.

In 2019 Madrid hosted 5.6 million tourists.

Population density: 5400 people per square kilometer.

Trade exports 2022: 4.99 billion Euros.



Barcelona

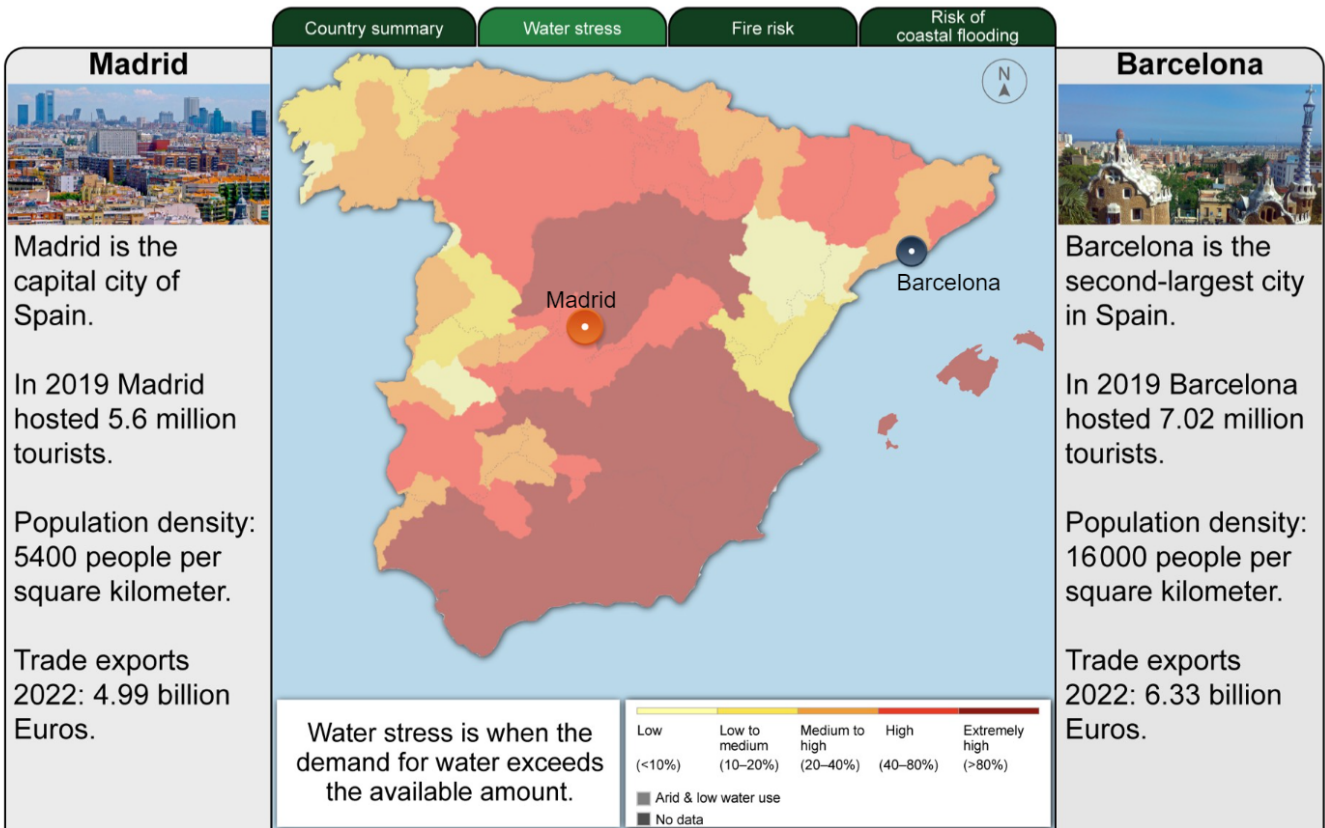


Barcelona is the second-largest city in Spain.

In 2019 Barcelona hosted 7.02 million tourists.

Population density: 16000 people per square kilometer.

Trade exports 2022: 6.33 billion Euros.



Country summary Water stress Fire risk Risk of coastal flooding

Madrid



Madrid is the capital city of Spain.

In 2019 Madrid hosted 5.6 million tourists.

Population density: 5400 people per square kilometer.

Trade exports 2022: 4.99 billion Euros.



Barcelona



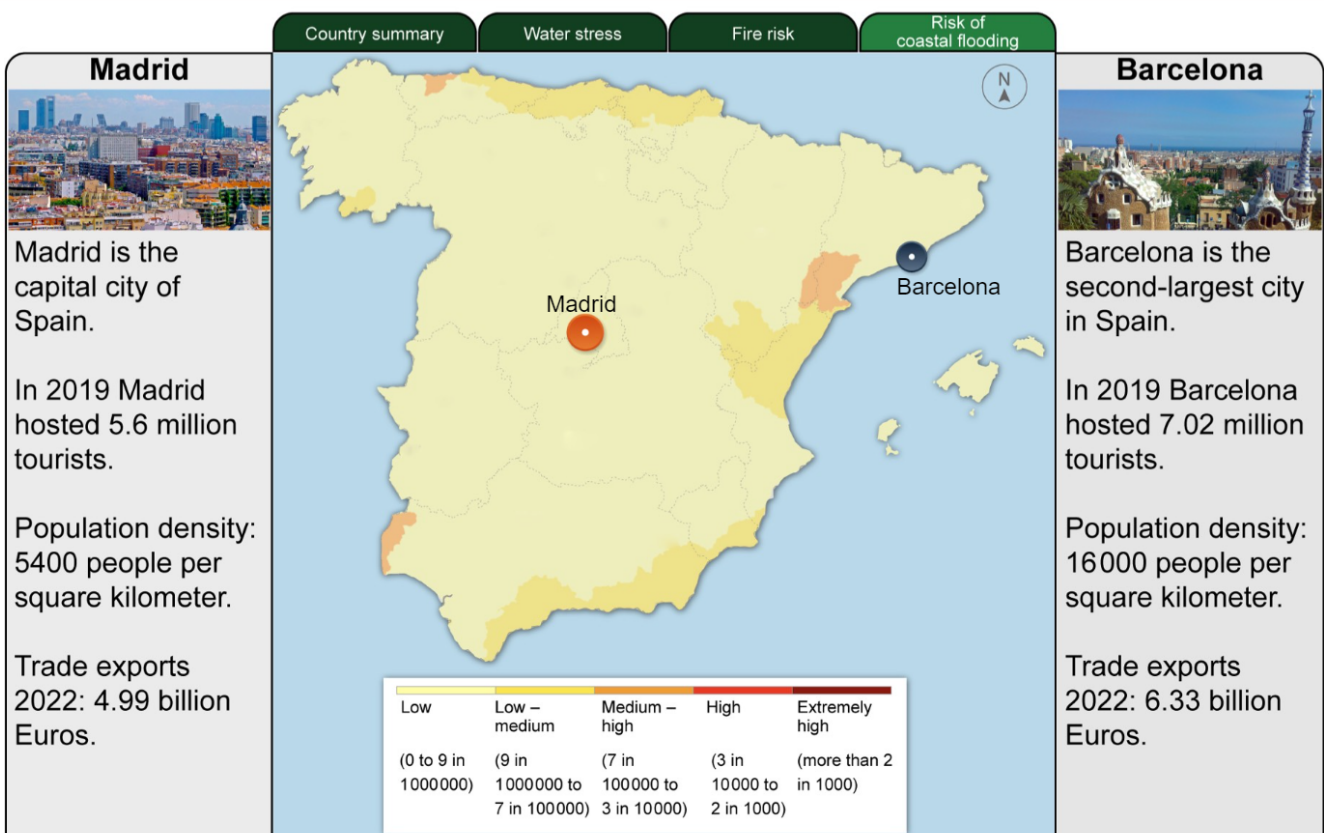
Barcelona is the second-largest city in Spain.

In 2019 Barcelona hosted 7.02 million tourists.

Population density: 16000 people per square kilometer.

Trade exports 2022: 6.33 billion Euros.

Forest fire risk Very low Low Medium High Very high Not assessed



Madrid



Madrid is the capital city of Spain.

In 2019 Madrid hosted 5.6 million tourists.

Population density: 5400 people per square kilometer.

Trade exports 2022: 4.99 billion Euros.

Country summary

Water stress

Fire risk

Risk of coastal flooding

Barcelona



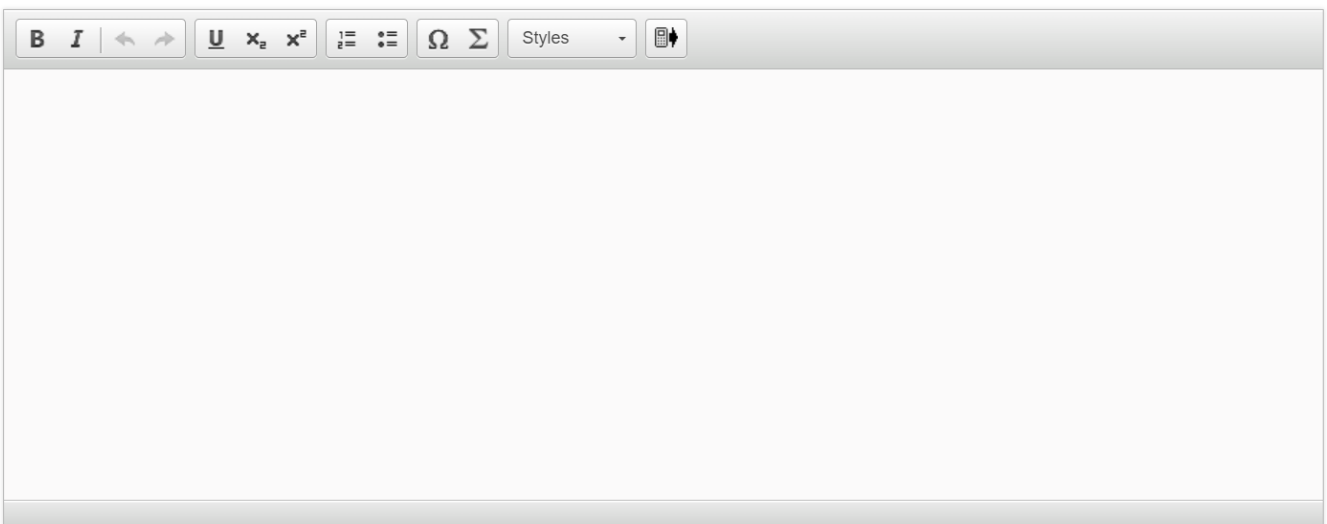
Barcelona is the second-largest city in Spain.

In 2019 Barcelona hosted 7.02 million tourists.

Population density: 16000 people per square kilometer.

Trade exports 2022: 6.33 billion Euros.

With reference to both cities in **Source B**, **justify** whether Barcelona or Madrid will be impacted more by climate change.



The image shows a rich text editor toolbar with the following icons from left to right: Bold (B), Italic (I), text color (A with a color swatch), background color (A with a color swatch), bulleted list (three horizontal lines with dots), numbered list (three horizontal lines with numbers), link (Ω), unlink (Σ), a 'Styles' dropdown menu, and undo/redo (curved arrows).



Question 8 (24 marks)



Watch the video below and answer the question that follows.



[Video](#)

[Transcript](#)

Since 1995, the UN has been bringing together almost every country for global climate summits, called COPs. This stands for “Conference of the Parties”.

In 2022, at COP27, António Guterres, the UN Secretary General, stated “Greenhouse gas emissions keep growing. Global temperatures keep rising. And our planet is fast approaching tipping points that will make climate chaos irreversible.”

He stressed the need for all to respond and stated “It will take each and every one of us. Humanity has a choice: cooperate or perish.”

To what extent is it important that all countries respond to the problem of climate change?

In a well-structured essay, you must:

- consider different perspectives
- provide explanations and examples to support your arguments.

