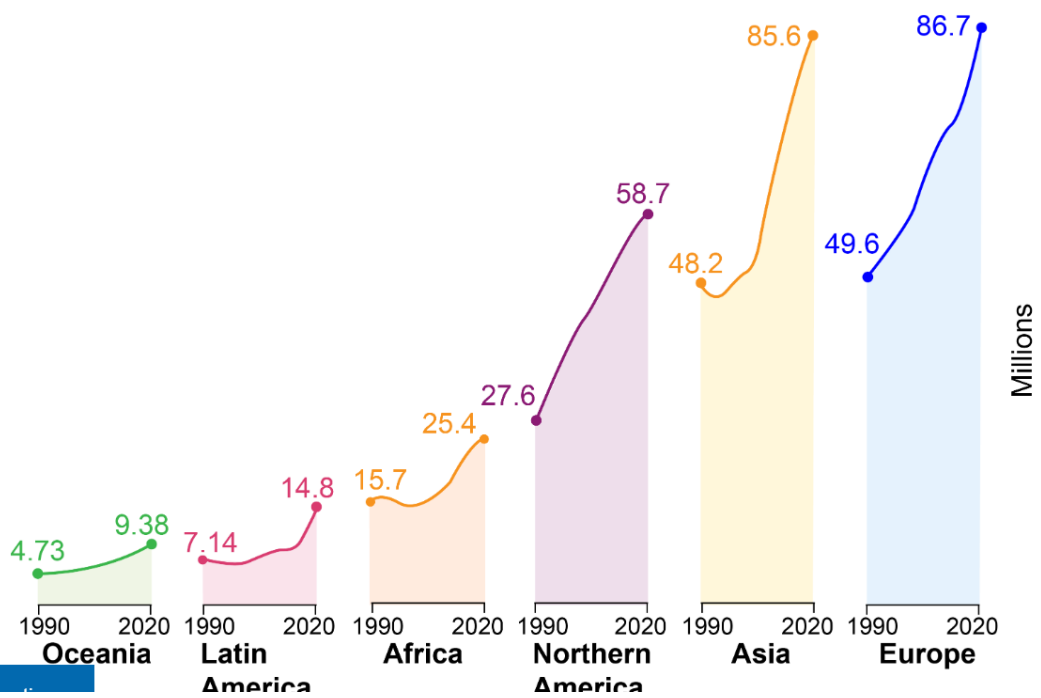
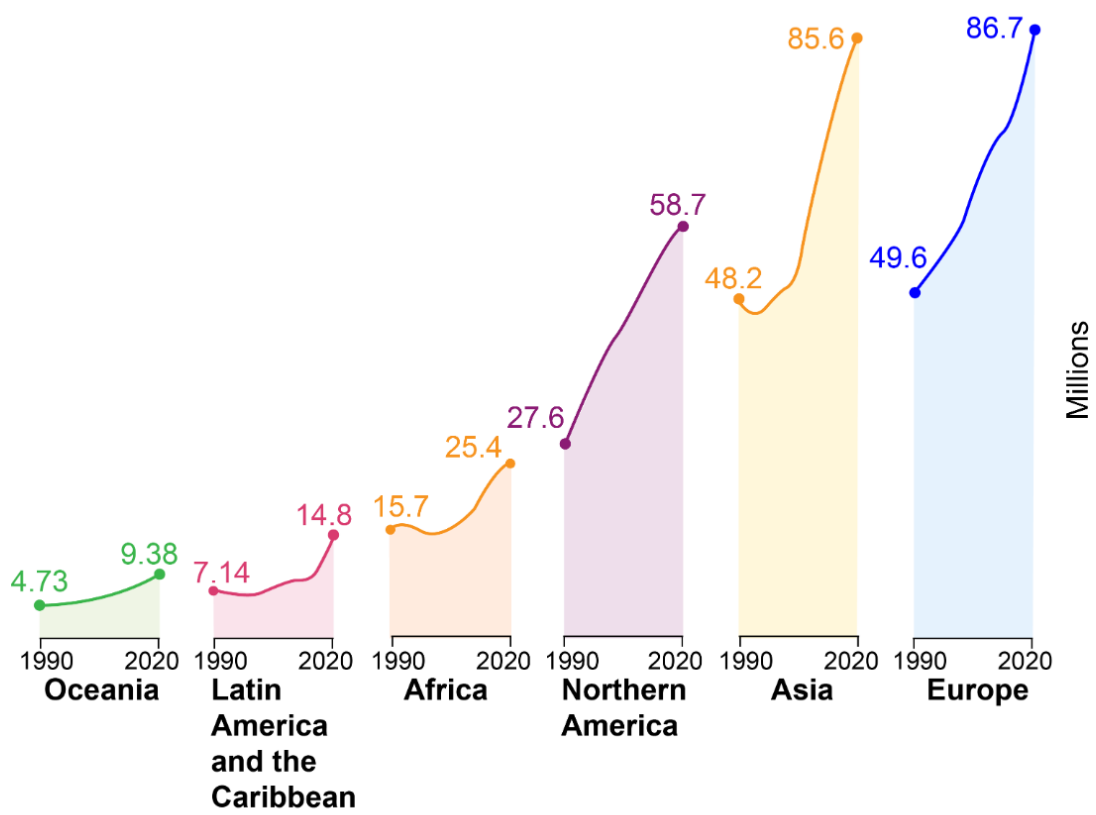




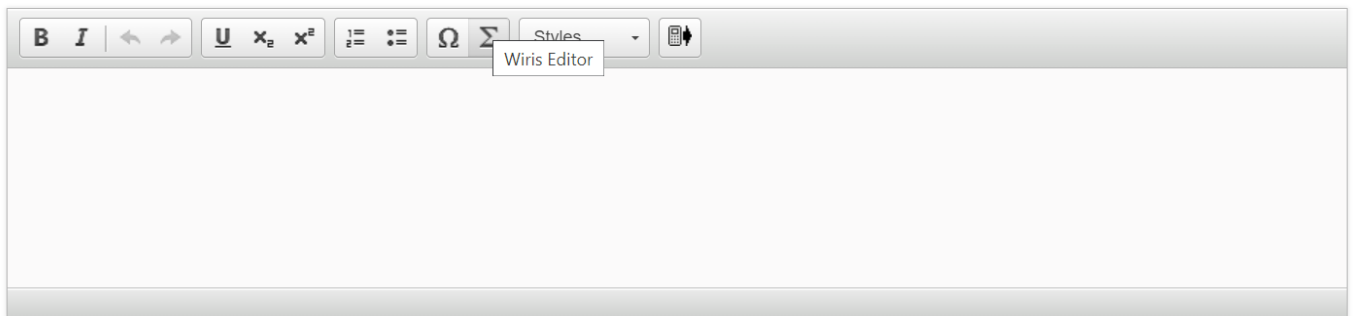
Question 1 (2 marks)

Look at **Source A**, which shows the increase in international migration between 1990 and 2020, and answer the question that follows.





With reference to **Source A**, **identify** the **two** regions that had the largest increase in millions of people between 1990 and 2020.



Question 2 (2 marks)

In 2020, the United Nations stated that “the estimated number of international migrants has increased over the past five decades.”

©

**Outline one** reason international migration has increased over the past five decades.

**B** *I* ← → U  $x_2$   $x^2$   $\frac{1}{2}$   $\frac{3}{4}$   $\Omega$   $\Sigma$  Styles



Question 3 (2 marks)



**Outline one** impact migration can have on a country or region.

**B** *I* ← → U  $x_2$   $x^2$   $\equiv$   $\equiv$   $\Omega$   $\Sigma$  Styles





**Question 4** (8 marks)

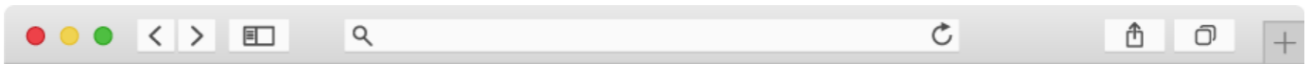
As a government consultant, you have been asked by the city officials of Madrid, Spain to advise them on the integration of migrants into their community. You suggested that they should investigate the **social integration** of migrants. The city officials have shared their action plan for you to evaluate.

**This media is interactive**

Click on the blue arrow icons to see their action plan.

This media is interactive.

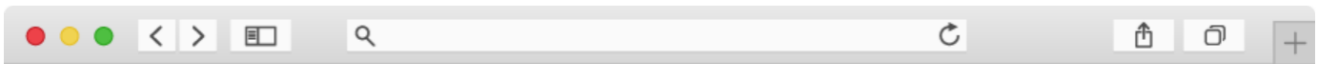
Click on the blue arrow icons to see their action plan.



**Overall timeline for  
the investigation:  
4 weeks**



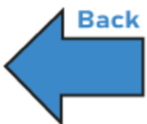
**Evaluate** the proposed action plan.



## Step #1: Research on the sense of belonging



- Collect data from the government archives to find out in which areas migrants live.
- Survey migrants that arrived in the last 5 years to ask if they feel that they are part of the community.



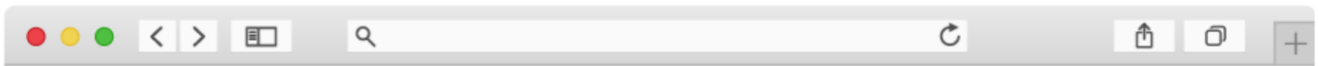


## Step #2: Research on language and schooling



- Find out if a majority of migrants speak the local language.
- Contact local schools to enquire on the number of migrants who graduated compared to local students.



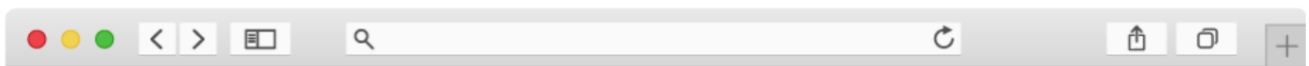


### Step #3: Research on healthcare



- Collect data from hospitals to find out if migrants have access to healthcare.





## Step #4: Research on political participation



- Review statistics of last general election to find out if migrants voted.

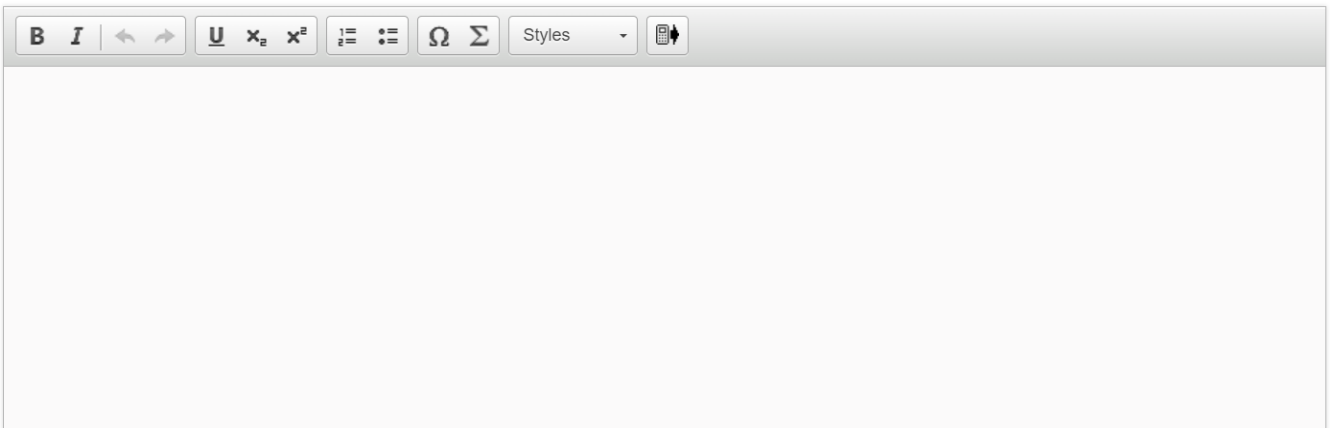




**Step #5:  
Compile results.**



**Evaluate** the proposed action plan.



A rich text editor toolbar with the following icons from left to right: Bold (B), Italic (I), Undo (↶), Redo (↷), Underline (U), Subscript (x<sub>2</sub>), Superscript (x<sup>2</sup>), Bulleted List (≡), Numbered List (≡), Link (Ω), Unlink (Σ), Styles (dropdown menu), and Mobile View (phone icon).



### Question 5 (12 marks)

Following your work with the city officials of Madrid on the **social integration** of migrants, you have been asked by another city's local government to plan an investigation into the **economic integration** of migrants.



### Question 5a (2 marks)

**Formulate** a clear and focused research question to help guide your investigation into the economic integration of migrants.

**B I** | | **U**  $x_2$   $x^2$  | | | Styles



Question 5b (4 marks)

**Justify** the usefulness of your research question for the local government looking into the economic integration of migrants.

**B** *I* | ← → |  x<sub>2</sub> x<sup>2</sup> | ☰ ☷ | Ω Σ | Styles ▾ | 📱

Empty text area for the answer.



Question 5c (4 marks)

Select **one** of the sources below and **explain** whether or not it would be beneficial to your investigation on the economic integration of migrants.

- Local newspaper article about migrants' countries of origin.
- Statistics on the wages of migrants that live in the community.
- Interview transcript with the director of the community centre.
- Article from an NGO website on the most common jobs given to migrants.

**B** **I** | ← → |  x<sub>2</sub> x<sup>2</sup> | ☰ ☱ | Ω Σ | Styles ▾ | 📱



Question 5d (2 marks)

**Outline one** challenge you may experience when investigating the economic integration of migrants.

**B** *I* | ↶ ↷ |    $x_2$   $x^2$  | ☰ ☷ | Ω Σ | Styles ▾ | 📄 ↕

Question 6 (18 marks)

You will be attending the next Young Global Leaders Conference, which will take place in New York in 2025. The focus of this conference is human rights, as shown on the poster below.

# Young Global Leaders Conference

## For HUMAN RIGHTS

22–24 June 2025  
New York, USA

- Right to equality and non-discrimination ✓
- Right to participation and inclusion ✓
- Right to education ✓
- Right to choose your religion ✓
- Right to freedom of opinion ✓



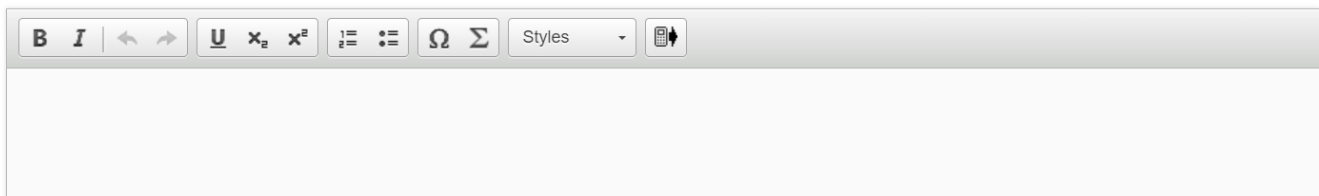
Scroll down to continue



You have been asked to deliver a speech at the conference to **explain** how social protest movements have helped to minimize the violation of human rights.

In your speech, you **must**:

- include an opening and closing statement
- choose **one** human right either from the poster or from your MYP studies or your own knowledge
- choose **one** community to explore your chosen human right
- refer to **one** past or present social protest movement.





**Question 7** (8 marks)

In terms of its origin, purpose, value and limitations, consider the usefulness of the video below to an MYP student studying sustainable development. The video was produced by a well-known charity called Xein Environmental which campaigns for a more sustainable world.



The 20th century was dominated by a simple business mindset

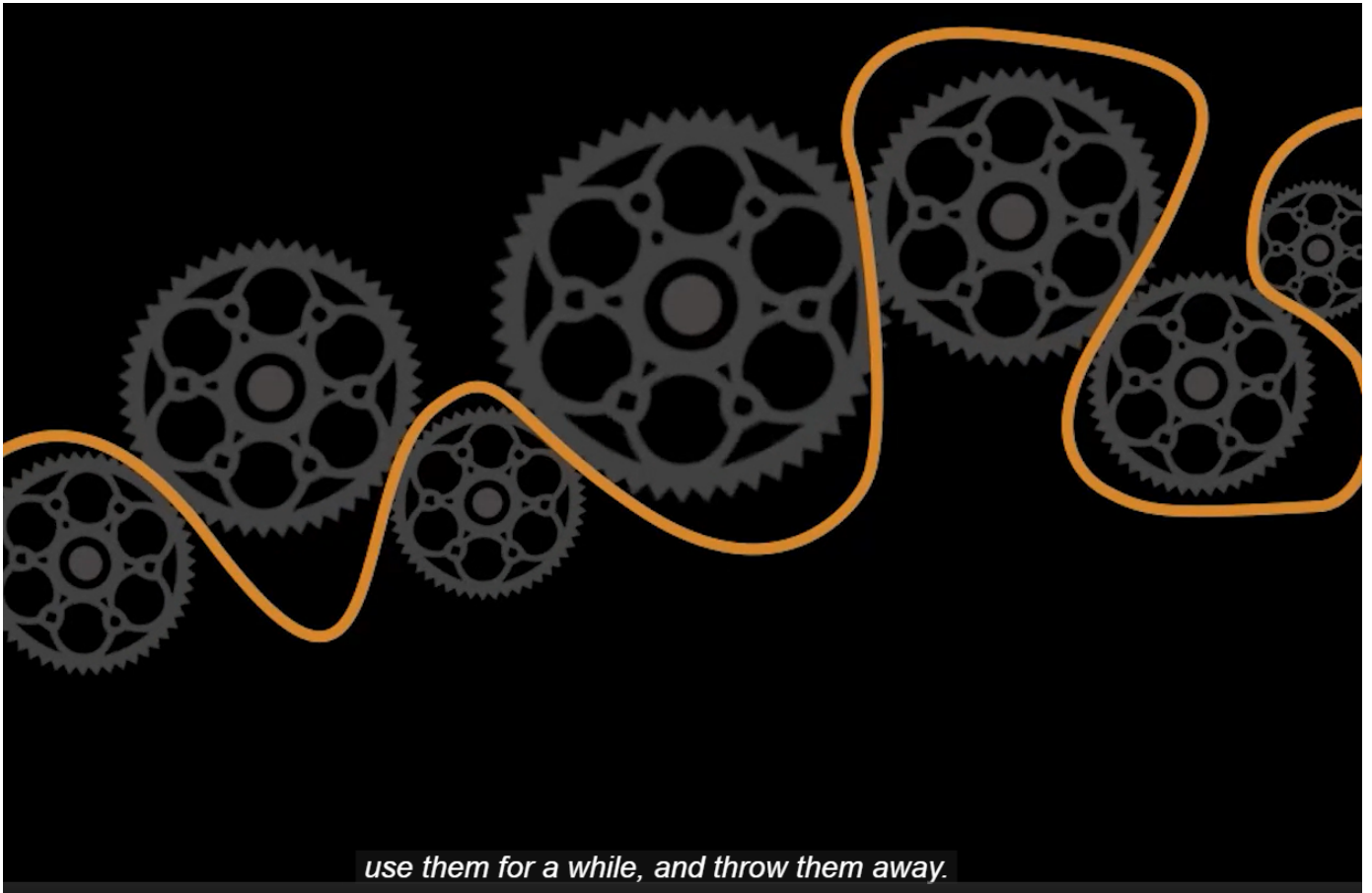


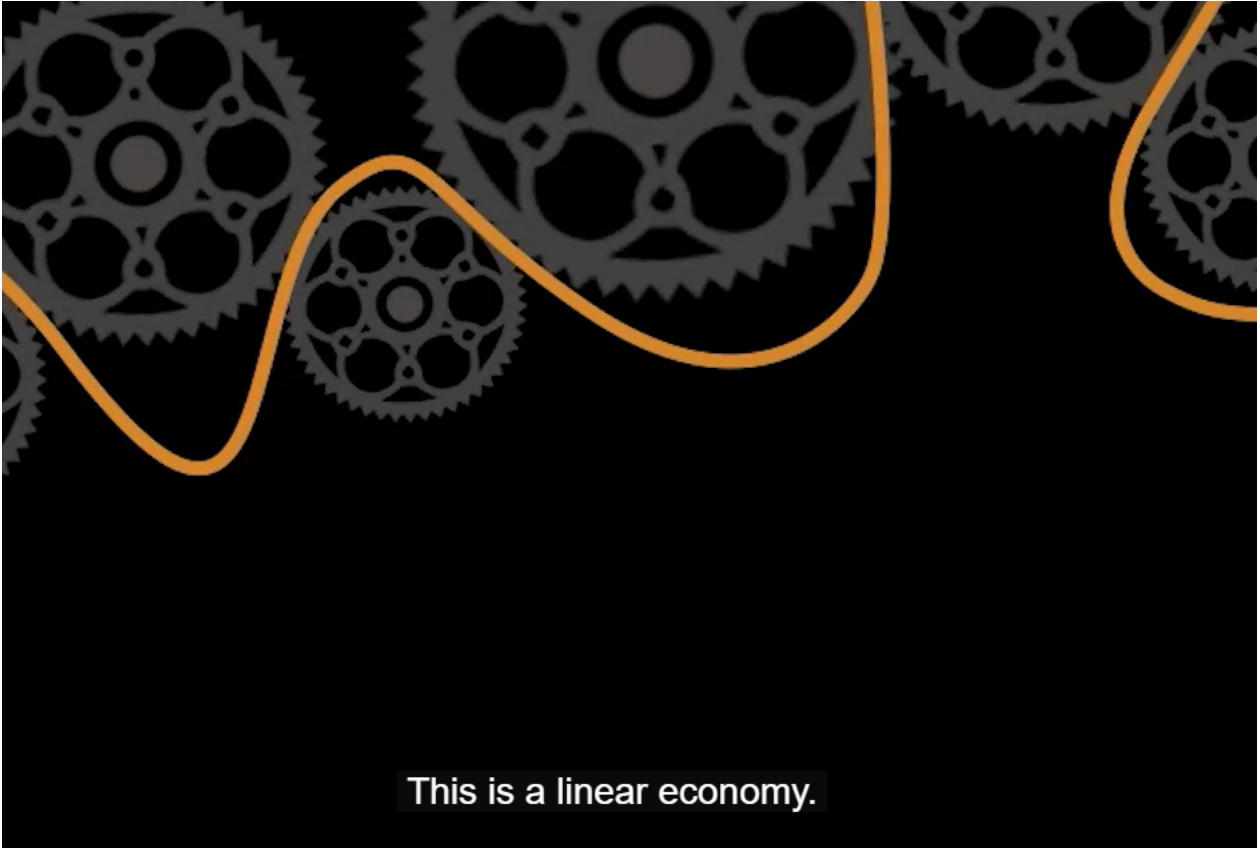
that asked one very important question –













Some 21st century business leaders are asking a completely different set of questions.




"Can we think of additional ways to benefit society when designing this product?"



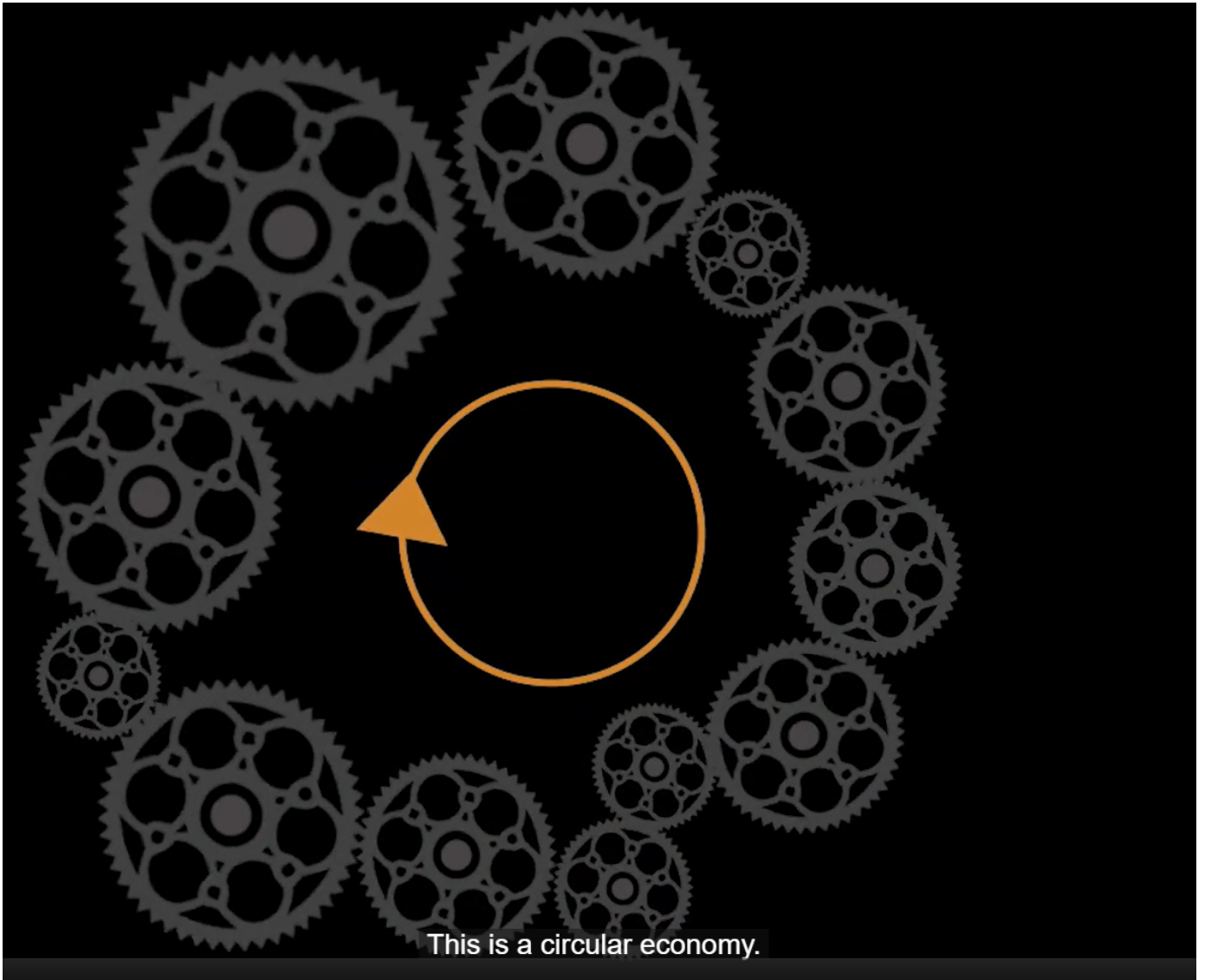


How can the product help improve the system that we are a part of?"



A decorative banner with a black background. It features several interlocking gears of various sizes and colors (grey, white, and blue) arranged in a cluster. A thin white line runs horizontally across the bottom of the banner, with a small blue circle on the right side.

Instead, they are used again and again, resulting in a more sustainable world.





Question 7a (1 mark)

**State** the origin of the video.

**B** *I* ← → U  $x_p$   $x^e$   $\Omega$   $\Sigma$  Styles





Question 7b (1 mark)

**State** the purpose of the video.

**B** *I* | ← → | U  $x_2$   $x^2$  | ☰ ☷ |  $\Omega$   $\Sigma$  | Styles ▾ | 📱

Insert Special Character



Question 7c (3 marks)

**Describe one** value of the video for a student studying sustainable development.

**B** *I* | ← → |  x<sub>e</sub> x<sup>2</sup> | ☰ ☷ | Ω Σ | Styles ▾ | 📄 ↕



**Question 7d** (3 marks)

**Describe one** limitation of the video for a student studying sustainable development.

**B** *I* | ← → | U  $x_2$   $x^2$  | ☰ ☷ |  $\Omega$   $\Sigma$  | Styles ▾ | 📱

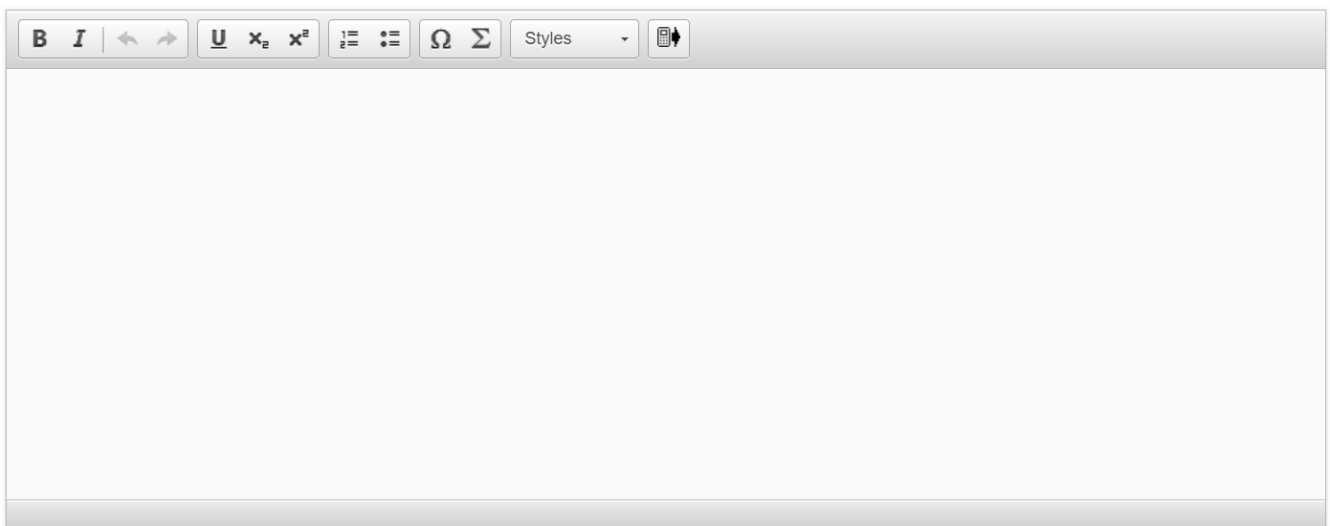


**Question 8** (4 marks)

The video from question 7 has been repeated here for information.



Using the video, **justify** the need to move away from a linear economy to a circular economy.



A rich text editor toolbar with the following icons from left to right: Bold (B), Italic (I), Undo (left arrow), Redo (right arrow), Underline (U), Text Color (x<sub>2</sub>), Background Color (x<sup>2</sup>), Bulleted List (≡), Numbered List (≡), Link (Ω), Unlink (Σ), Styles (dropdown menu), and a mobile device icon.

**Question 9** (24 marks)

In the past, gross domestic product (GDP) was the main focus when measuring development. Recently, other indicators measuring different aspects of life such as population dynamics, education and quality of life have also been used.

Write a well-structured essay in response to the following.

**To what extent** can development indicators give us a better understanding into a city's or country's or region's development?

In your essay, you **must**:

- provide examples to support your arguments
- consider different perspectives.

**B** *I* | ← → | U  $x_2$   $x^2$  |  $\int$   $\sum$  |  $\Omega$   $\Sigma$  | Styles ▾ | 📄