

No part of this product may be reproduced in any form or by any electronic or mechanical means, including information storage and retrieval systems, without written permission from the IB.

Additionally, the license tied with this product prohibits commercial use of any selected files or extracts from this product. Use by third parties, including but not limited to publishers, private teachers, tutoring or study services, preparatory schools, vendors operating curriculum mapping services or teacher resource digital platforms and app developers, is not permitted and is subject to the IB's prior written consent via a license. More information on how to request a license can be obtained from <http://www.ibo.org/contact-the-ib/media-inquiries/for-publishers/guidance-for-third-party-publishers-and-providers/how-to-apply-for-a-license>.

Aucune partie de ce produit ne peut être reproduite sous quelque forme ni par quelque moyen que ce soit, électronique ou mécanique, y compris des systèmes de stockage et de récupération d'informations, sans l'autorisation écrite de l'IB.

De plus, la licence associée à ce produit interdit toute utilisation commerciale de tout fichier ou extrait sélectionné dans ce produit. L'utilisation par des tiers, y compris, sans toutefois s'y limiter, des éditeurs, des professeurs particuliers, des services de tutorat ou d'aide aux études, des établissements de préparation à l'enseignement supérieur, des fournisseurs de services de planification des programmes d'études, des gestionnaires de plateformes pédagogiques en ligne, et des développeurs d'applications, n'est pas autorisée et est soumise au consentement écrit préalable de l'IB par l'intermédiaire d'une licence. Pour plus d'informations sur la procédure à suivre pour demander une licence, rendez-vous à l'adresse <http://www.ibo.org/fr/contact-the-ib/media-inquiries/for-publishers/guidance-for-third-party-publishers-and-providers/how-to-apply-for-a-license>.

No se podrá reproducir ninguna parte de este producto de ninguna forma ni por ningún medio electrónico o mecánico, incluidos los sistemas de almacenamiento y recuperación de información, sin que medie la autorización escrita del IB.

Además, la licencia vinculada a este producto prohíbe el uso con fines comerciales de todo archivo o fragmento seleccionado de este producto. El uso por parte de terceros —lo que incluye, a título enunciativo, editoriales, profesores particulares, servicios de apoyo académico o ayuda para el estudio, colegios preparatorios, desarrolladores de aplicaciones y entidades que presten servicios de planificación curricular u ofrezcan recursos para docentes mediante plataformas digitales— no está permitido y estará sujeto al otorgamiento previo de una licencia escrita por parte del IB. En este enlace encontrará más información sobre cómo solicitar una licencia: <http://www.ibo.org/es/contact-the-ib/media-inquiries/for-publishers/guidance-for-third-party-publishers-and-providers/how-to-apply-for-a-license>.

Chemistry

Higher level

Paper 3

Thursday 23 May 2019 (morning)

Candidate session number

1 hours 15 minutes

--	--	--	--	--	--	--	--	--	--

Instructions to candidates

- Write your session number in the boxes above.
- Do not open this examination paper until instructed to do so.
- Answers must be written within the answer boxes provided.
- A calculator is required for this paper.
- A clean copy of the **chemistry data booklet** is required for this paper.
- The maximum mark for this examination paper is **[45 marks]**.

Section A	Questions
Answer all questions.	1 – 2

Section B	Questions
Answer all of the questions from one of the options.	
Option A — Materials	3 – 8
Option B — Biochemistry	9 – 13
Option C — Energy	14 – 20
Option D — Medicinal chemistry	21 – 27



Section A

Answer **all** questions. Answers must be written within the answer boxes provided.

1. This question is about a mug made of a lead alloy.



The rate of lead dissolving in common beverages with various pH values was analysed.

Lead dissolving in beverages at various times and temperatures

Experiment	Beverage	pH	Time / min	Temp. / °C	Lead concentration / mg dm^{-3}
1	Cola	2.5	5	16	6
2	Cola	2.5	30	16	14
3	Cola	2.5	60	16	23
4	Cola	2.5	5	18	11
5	Lemonade	2.9	5	18	14
6	Orange juice	3.7	5	18	18
7	Beer	4.2	5	18	2.3
8	Tap water	5.9	5	18	15

[Source: first published in *Chemistry in Australia*, chemaust.raci.org.au]

(This question continues on the following page)



(Question 1 continued)

- (a) Identify the experiment with the highest rate of lead dissolving. [1]

.....

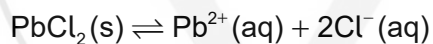
- (b) (i) Suggest why the relationship between time and lead concentration for Cola at 16 °C is not linear. [1]

.....
.....
.....

- (ii) Examine, giving a reason, whether the rate of lead dissolving increases with acidity at 18 °C. [1]

.....
.....
.....

- (c) (i) Lead(II) chloride, PbCl₂, has very low solubility in water.



Explain why the presence of chloride ions in beverages affects lead concentrations. [2]

.....
.....
.....
.....
.....

(This question continues on the following page)



(Question 1 continued)

- (ii) A mean daily lead intake of greater than 5.0×10^{-6} g per kg of body weight results in increased lead levels in the body.

Calculate the volume, in dm^3 , of tap water from experiment 8 which would exceed this daily lead intake for an 80.0 kg man. [2]

.....

.....

.....

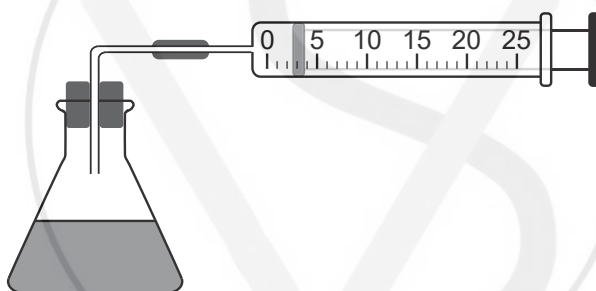
.....

.....

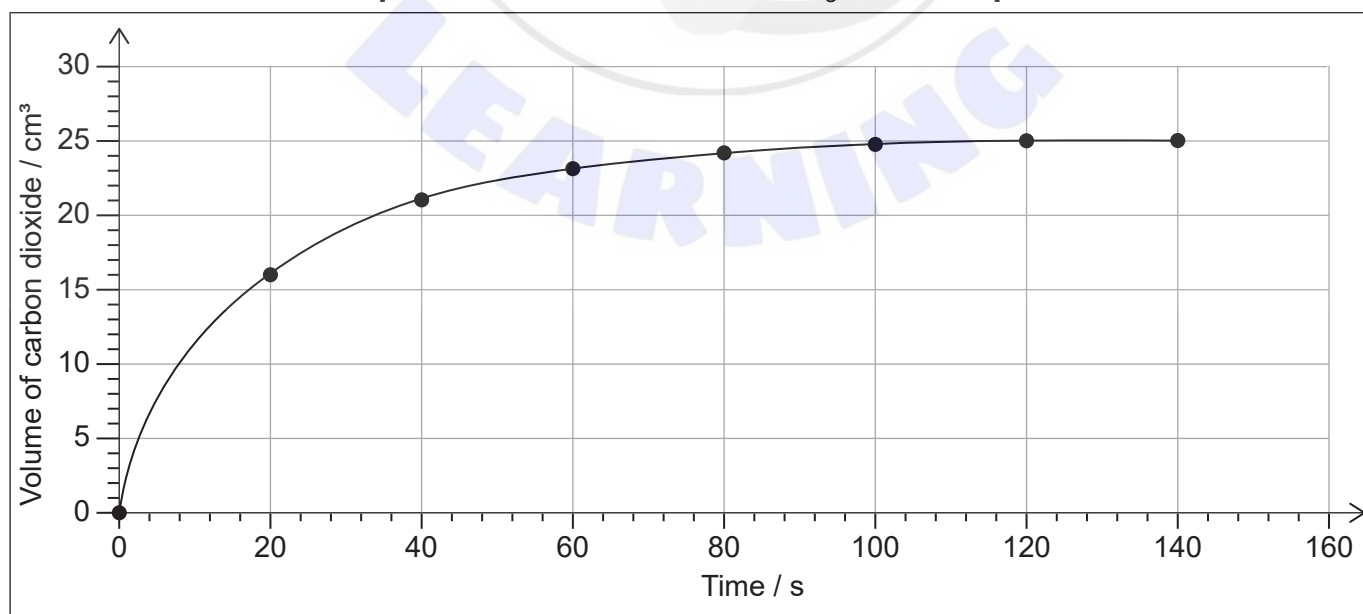
2. Bromine and methanoic acid react in aqueous solution.



The reaction was monitored by measuring the volume of carbon dioxide produced as time progressed.



[Source: © International Baccalaureate Organization 2019]



[Source: © International Baccalaureate Organization 2019]

(This question continues on the following page)



(Question 2 continued)

- (a) Determine from the graph the rate of reaction at 20 s, in $\text{cm}^3 \text{s}^{-1}$, showing your working. [3]

.....

.....

.....

.....

- (b) Outline, with a reason, another property that could be monitored to measure the rate of this reaction. [2]

.....

.....

.....

.....

.....

- (c) (i) Describe **one** systematic error associated with the use of the gas syringe, and how the error affects the calculated rate. [2]

.....

.....

.....

.....

.....

.....

.....

- (ii) Identify **one** error associated with the use of an accurate stopwatch. [1]

.....

.....



Section B

Answer **all** of the questions from **one** of the options. Answers must be written within the answer boxes provided.

Option A — Materials

3. Describe the characteristics of the nematic liquid crystal phase. [2]

Shape of molecules:

.....

Distribution:

.....

.....

4. Metals are extracted from their ores by several methods, including electrolysis and reduction with carbon.
- (a) Determine the mass of aluminium, in g, that could be extracted from an appropriate solution by a charge of 48 250 C. Use sections 2 and 6 of the data booklet. [3]

.....

.....

.....

.....

.....

.....

.....

.....

(Option A continues on the following page)



(Option A, question 4 continued)

- (b) Once extracted, the purity of the metal can be assessed using ICP-MS. Suggest **two** advantages of using plasma technology rather than regular mass spectrometry. [2]

.....

.....

.....

.....

.....

- (c) Explain the action of metals as heterogeneous catalysts. [2]

.....

.....

.....

.....

.....

- (d) Outline how alloys conduct electricity and why they are often harder than pure metals. [2]

Conduct electricity:

.....

.....

.....

Harder than pure metals:

.....

.....

.....

- (e) Carbon nanotubes are added to metals to increase tensile strength.
Write an equation for the formation of carbon nanotubes from carbon monoxide. [1]

.....

.....

(Option A continues on the following page)

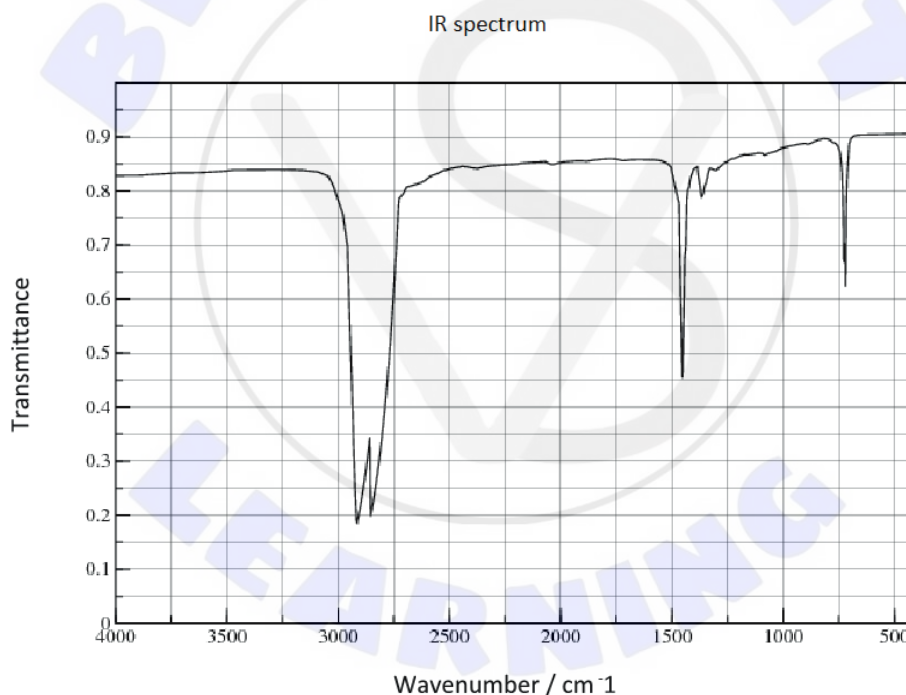


(Option A continued)

5. Polymers have a wide variety of uses but their disposal can be problematic.

- (a) Draw a section of isotactic polychloroethene (polyvinylchloride, PVC) showing all the atoms and all the bonds of **four** monomer units. [2]

- (b) The infrared (IR) spectrum of polyethene is given.



[Source: used with kind permission from Dr Aubrey Jaffer]

Suggest how the IR spectrum of polychloroethene would differ, using section 26 of the data booklet. [1]

.....

.....

(Option A continues on the following page)



(Option A, question 5 continued)

(c) Explain how plasticizers affect the properties of plastics. [2]

.....

.....

.....

.....

.....

(d) Suggest why the addition of plasticizers is controversial. [1]

.....

.....

.....

(e) Outline, giving a reason, how addition and condensation polymerization compare with regard to green chemistry. [1]

.....

.....

.....

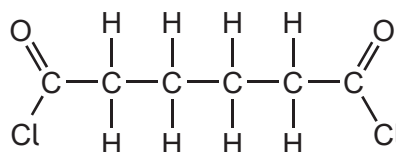
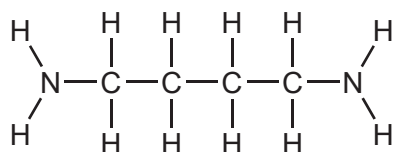
.....

(Option A continues on the following page)

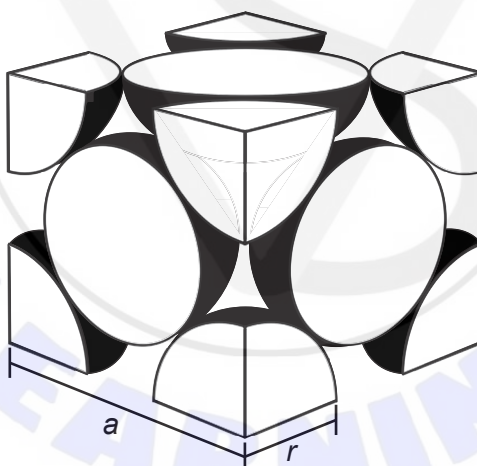


(Option A, question 5 continued)

- (f) Draw the full structural formula of the organic functional group formed during the polymerization of the two reactants below. [1]



6. Calcium has a face-centred cubic (cubic close packing) arrangement of atoms.



[Source: © International Baccalaureate Organization 2019]

a = unit cell dimension, r = metallic radius

- (a) State the number of atoms in the unit cell. [1]

.....

.....

(Option A continues on the following page)



(Option A, question 6 continued)

(b) Determine the density of calcium, in g cm^{-3} , using section 2 of the data booklet.

$A_r = 40.08$; metallic radius (r) = $1.97 \times 10^{-10} \text{ m}$

[3]

.....
.....
.....
.....
.....
.....
.....
.....

7. Superconductivity has many applications.

(a) State what is meant by a superconductor.

[1]

.....
.....

(b) Outline the difference in behaviour of Type 1 and Type 2 superconductors when the temperature is lowered.

[1]

.....
.....
.....

(Option A continues on the following page)



(Option A continued)

8. Heavy metals are toxic even in very low concentrations.

(a) Outline why heavy metals are toxic.

[1]

.....
.....
.....

(b) Determine the maximum concentration of lead(II) ions at 298 K in a solution in which the concentration of carbonate ions is maintained at $1.10 \times 10^{-4} \text{ mol dm}^{-3}$. Use section 32 of the data booklet.

[2]

.....
.....
.....
.....
.....

(c) State a method, other than precipitation, of removing heavy metal ions from solution.

[1]

.....
.....

End of Option A



Option B — Biochemistry

9. Proteins have structural or enzyme functions.

(a) (i) Some proteins form an α -helix. State the name of another secondary protein structure. [1]

.....

(ii) Compare and contrast the bonding responsible for the two secondary structures. [2]

One similarity:
.....
.....

One difference:
.....
.....
.....

(b) Explain why an increase in temperature reduces the rate of an enzyme-catalyzed reaction. [2]

.....
.....
.....
.....
.....

(c) State and explain how a competitive inhibitor affects the maximum rate, V_{max} , of an enzyme-catalyzed reaction. [2]

.....
.....
.....
.....

(Option B continues on the following page)



(Option B, question 9 continued)

(d) Oil spills are a major environmental problem.

(i) Suggest **two** reasons why oil decomposes faster at the surface of the ocean than at greater depth. [2]

.....

.....

.....

.....

.....

(ii) Oil spills can be treated with an enzyme mixture to speed up decomposition.

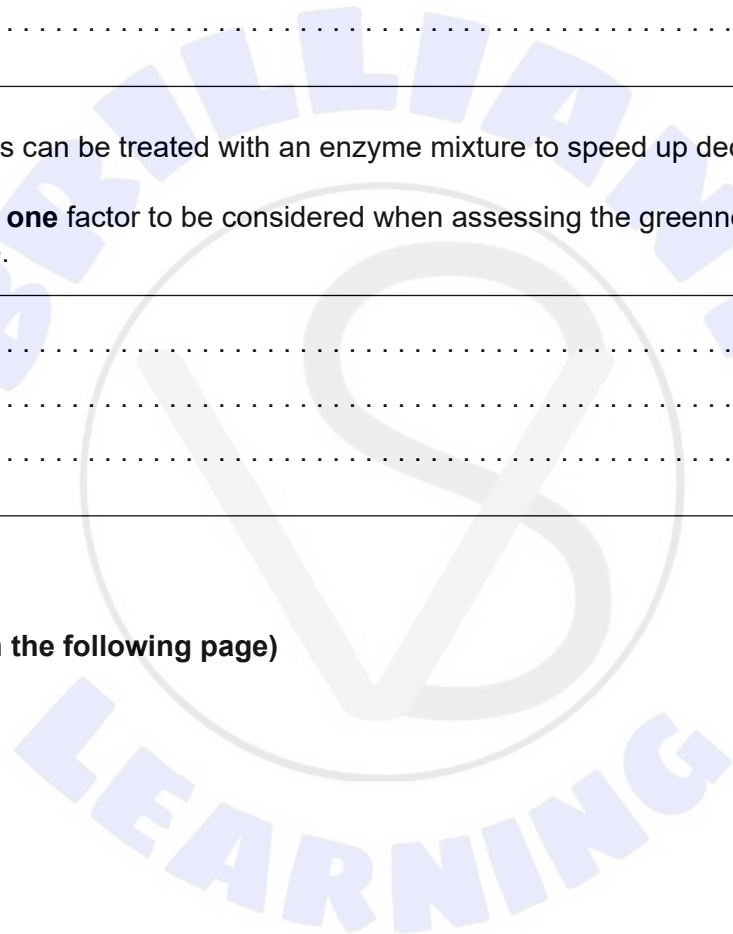
Outline **one** factor to be considered when assessing the greenness of an enzyme mixture. [1]

.....

.....

.....

(Option B continues on the following page)



(Option B continued)

10. Amino acids contain both acidic and basic functional groups.

(a) An aqueous solution of glutamine contains $0.600 \text{ mol dm}^{-3}$ of the zwitterion and $0.300 \text{ mol dm}^{-3}$ of the anionic form.

$$pK_{a1} = 2.2 \text{ and } pK_{a2} = 9.1$$

(i) Outline which pK_a value should be used when calculating the pH of the solution, giving your reason. [1]

.....
.....
.....
.....

(ii) Calculate the pH of the glutamine solution using section 1 of the data booklet. [1]

.....
.....
.....
.....

(b) Describe what is meant by the genetic code and how it relates to protein synthesis. [2]

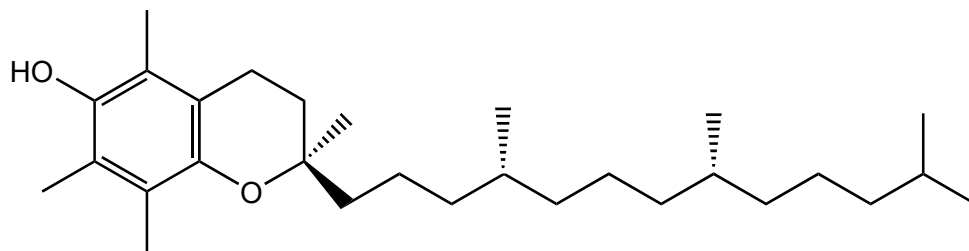
.....
.....
.....
.....

(Option B continues on the following page)



(Option B, question 11 continued)

(c) Lecithin aids the body's absorption of vitamin E.



The α -tocopherol form of vitamin E.

Suggest why vitamin E is fat-soluble.

[1]

.....

.....

.....

(d) Phospholipids are also found in lipoprotein structures.

Describe **one** effect of increased levels of low-density lipoprotein (LDL) on health.

[1]

.....

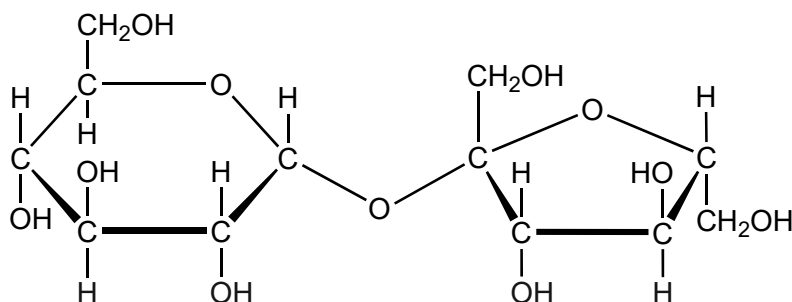
.....

(Option B continues on the following page)



(Option B continued)

12. Sucrose is a disaccharide.



(a) State the name of the functional group forming part of the ring structure of each monosaccharide unit. [1]

.....

(b) Classify, giving your reason, the hexose (six-membered) ring of sucrose as an α or β isomer. [1]

.....

.....

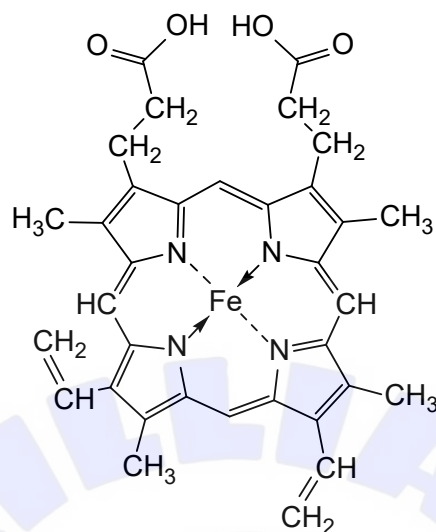
(c) Sketch the cyclic structures of the two monosaccharides which combine to form sucrose. [2]

(Option B continues on the following page)



(Option B continued)

13. Hemoglobin contains heme groups with the porphyrin ring bound to an iron(II) ion.



Heme B

(a) Outline why the complex formed between Fe²⁺ and oxygen is red. Refer to the diagram above and section 17 of the data booklet.

[2]

.....

.....

.....

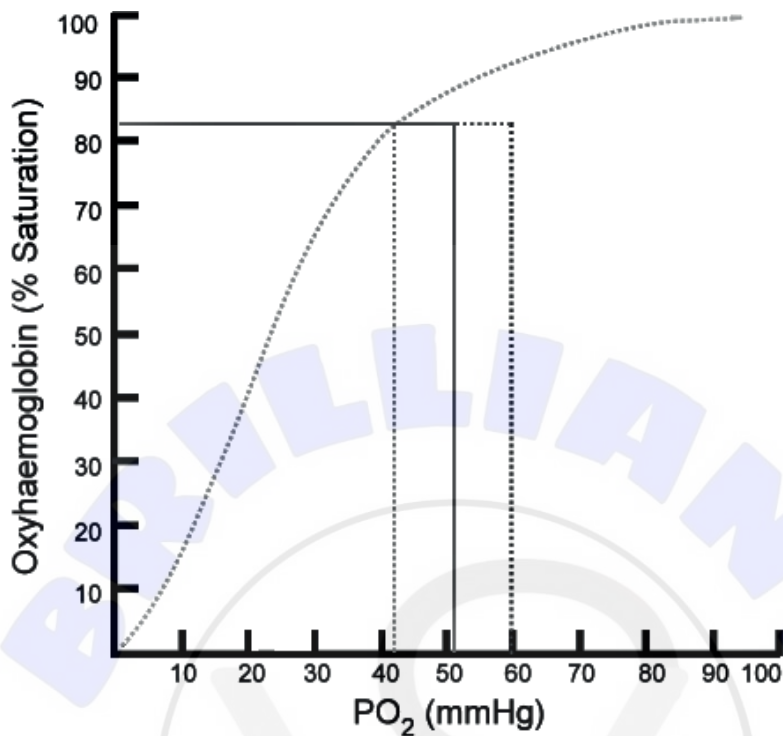
.....

(Option B continues on the following page)



(Option B, question 13 continued)

(b) A hemoglobin's oxygen dissociation curve is shown.



[Source: Ratznum, https://commons.wikimedia.org/wiki/File:Oxyhaemoglobin_dissociation_curve.png]

(i) Explain the shape of the curve.

[2]

.....

.....

.....

.....

.....

(ii) Sketch another line to show the effect of an increase in body temperature on the oxygen saturation of hemoglobin.

[1]

End of Option B



Option C — Energy

14. The regular rise and fall of sea levels, known as tides, can be used to generate energy.

State **one** advantage, other than limiting greenhouse gas emissions, and **one** disadvantage of tidal power. [2]

Advantage:
Disadvantage:

15. This question is about fuel for engines.

(a) Crude oil can be converted into fuels by fractional distillation and cracking.

Contrast these two processes. [2]

Fractional distillation	Cracking
.....
.....

(Option C continues on the following page)



(Option C, question 15 continued)

- (b) Determine the specific energy, in kJ g^{-1} , and energy density, in kJ cm^{-3} , of hexane, C_6H_{14} . Give both answers to three significant figures.

Hexane: $M_r = 86.2$; $\Delta H_c = -4163 \text{ kJ mol}^{-1}$; density = 0.660 g cm^{-3}

[2]

Specific energy:

.....
.....

Energy density:

.....
.....

- (c) Hydrocarbons need treatment to increase their octane number to prevent pre-ignition (knocking) before they can be used in internal combustion engines.

Describe how this is carried out and the molecular changes that take place.

[2]

.....
.....
.....
.....
.....

(Option C continues on the following page)

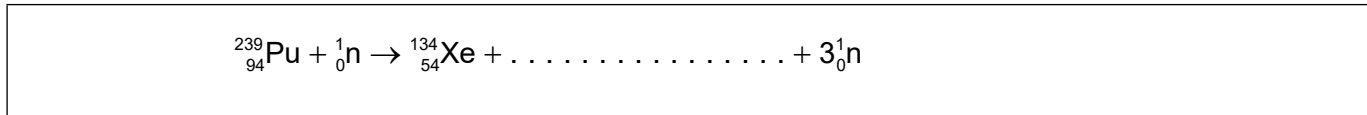


(Option C continued)

16. This question is about nuclear reactions.

(a) Fission of a nucleus can be initiated by bombarding it with a neutron.

(i) Determine the other product of the fission reaction of plutonium-239. [1]



(ii) Outline the concept of critical mass with respect to fission reactions. [1]

.....
.....
.....
.....

(iii) Outline **one** advantage of allowing all countries access to the technology to generate electricity by nuclear fission. [1]

.....
.....
.....

(b) State **one** advantage of using fusion reactions rather than fission to generate electrical power. [1]

.....
.....
.....

(c) Outline how the energy of a fission reaction can be calculated. [1]

.....
.....
.....

(Option C continues on the following page)



(Option C, question 16 continued)

- (d) Calculate the half-life of an isotope whose mass falls from 5.0×10^{-5} g to 4.0×10^{-5} g in 31.4 s, using section 1 of the data booklet. [2]

.....

.....

.....

.....

.....

.....

- 17.** This question is about biofuel.

Evaluate the use of biodiesel in place of diesel from crude oil. [2]

Strength:

.....

.....

Limitation:

.....

.....

- 18.** This question is about global warming.

- (a) Describe the effect of infrared (IR) radiation on carbon dioxide molecules. [2]

.....

.....

.....

.....

.....

(Option C continues on the following page)



(Option C, question 18 continued)

- (b) Outline **one** approach to controlling industrial emissions of carbon dioxide. [1]

.....

.....

.....

19. Electricity can be generated in a variety of ways.

- (a) Outline how a microbial fuel cell produces an electric current from glucose.



.....

.....

.....

.....

.....

.....

.....

- (b) The cell potential for the spontaneous reaction when standard magnesium and silver half-cells are connected is +3.17 V.

Determine the cell potential at 298 K when:

$$[\text{Mg}^{2+}] = 0.0500 \text{ mol dm}^{-3}$$

$$[\text{Ag}^+] = 0.100 \text{ mol dm}^{-3}$$

Use sections 1 and 2 of the data booklet. [2]

.....

.....

.....

.....

.....

(Option C continues on the following page)



(Option C, question 19 continued)

(c) Outline **one** difference between a primary and a secondary cell.

[1]

.....

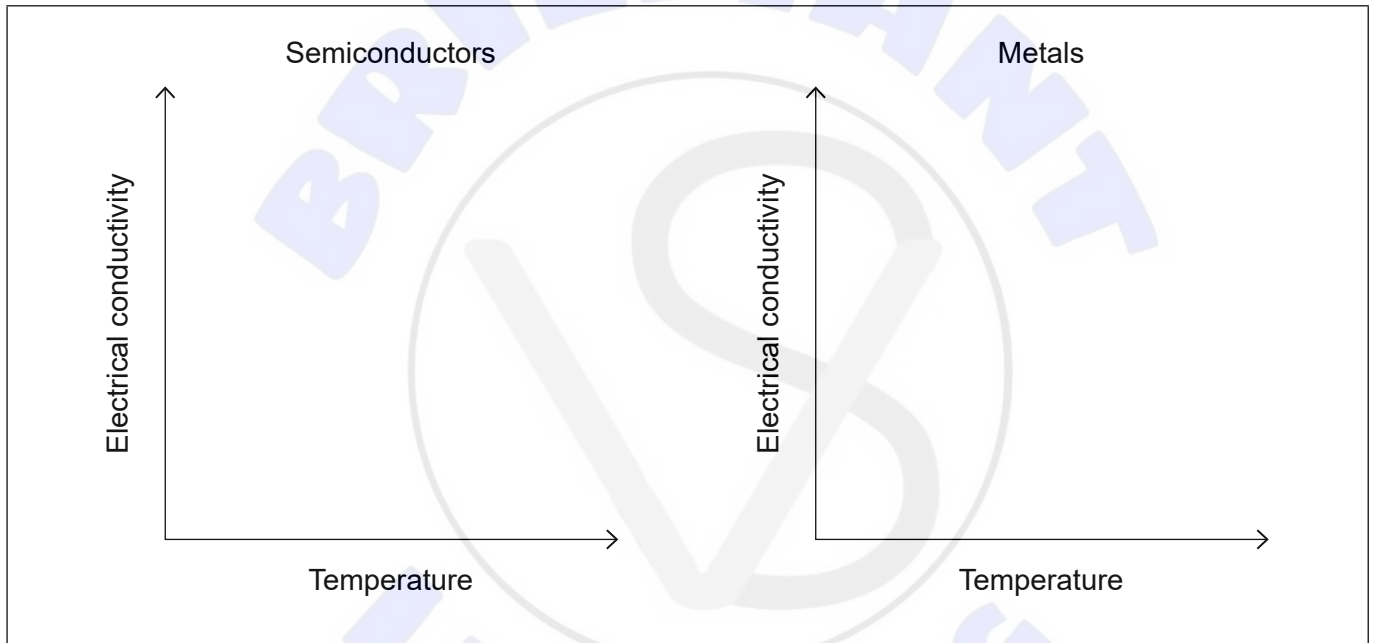
.....

.....

20. Semiconductors and light-sensitive dyes are used in photovoltaic cells.

(a) Sketch graphs to show the general effect of increasing temperature on the electrical conductivity of semiconductors and metals on the axes below.

[2]



(b) Explain the function of dyes in a dye-sensitized solar cell (DSSC).

[2]

.....

.....

.....

.....

.....

End of Option C



Option D — Medicinal chemistry

21. Medicines and drugs are tested for effectiveness and safety.

(a) Distinguish between therapeutic window and therapeutic index in humans. [2]

Therapeutic window:

.....

.....

.....

Therapeutic index:

.....

.....

.....

(b) Explain why diamorphine (heroin) is more potent than morphine using section 37 of the data booklet. [2]

.....

.....

.....

.....

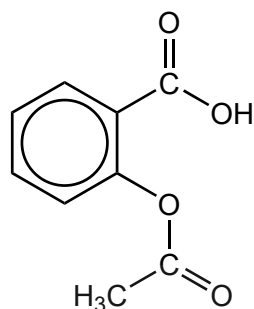
.....

(Option D continues on the following page)



(Option D continued)

22. A student synthesized aspirin, acetylsalicylic acid, in a school laboratory.



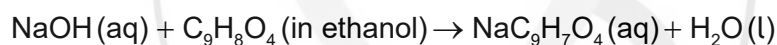
Aspirin
 $M_r = 180.17$

- (a) Predict **one** absorption band present in an infrared (IR) spectrum of aspirin, using section 26 of the data booklet. [1]

.....

.....

- (b) 0.300 g of crude aspirin was dissolved in ethanol and titrated with sodium hydroxide solution, NaOH(aq).



- (i) Determine the mass of aspirin which reacted with 16.25 cm³ of 0.100 mol dm⁻³ NaOH solution. [2]

.....

.....

.....

.....

.....

- (ii) Determine the percentage purity of the synthesized aspirin. [1]

.....

.....

.....

(Option D continues on the following page)



(Option D, question 22 continued)

- (c) Outline how aspirin can be chemically modified to increase its solubility in water. [1]

.....
.....

- (d) State why aspirin should not be taken with alcohol. [1]

.....
.....

23. Excess acid in the stomach can cause breakdown of the stomach lining.

- (a) (i) Outline how ranitidine (Zantac) inhibits stomach acid production. [1]

.....
.....
.....

- (ii) Outline **two** advantages of taking ranitidine instead of an antacid which neutralizes excess acid. [2]

.....
.....
.....
.....

(Option D continues on the following page)



(Option D, question 23 continued)

- (b) Some antacids contain carbonates.

Determine the pH of a buffer solution which contains $0.160 \text{ mol dm}^{-3} \text{ CO}_3^{2-}$ and $0.200 \text{ mol dm}^{-3} \text{ HCO}_3^-$, using section 1 of the data booklet.

$\text{p}K_a (\text{HCO}_3^-) = 10.32$

[1]

.....

.....

.....

.....

24. Antiviral medications have recently been developed for some viral infections.

- (a) Outline **one** way in which antiviral drugs work.

[1]

.....

.....

.....

- (b) Discuss **two** difficulties associated with solving the AIDS problem.

[2]

.....

.....

.....

.....

.....

(Option D continues on the following page)



(Option D continued)

25. Taxol is a drug that was once obtained from yew trees and is now produced using chiral auxiliaries.

(a) Examine the synthesis of taxol in terms of green chemistry criteria. [2]

.....

.....

.....

.....

.....

.....

(b) Outline the operation of a polarimeter used to distinguish between enantiomers. [2]

.....

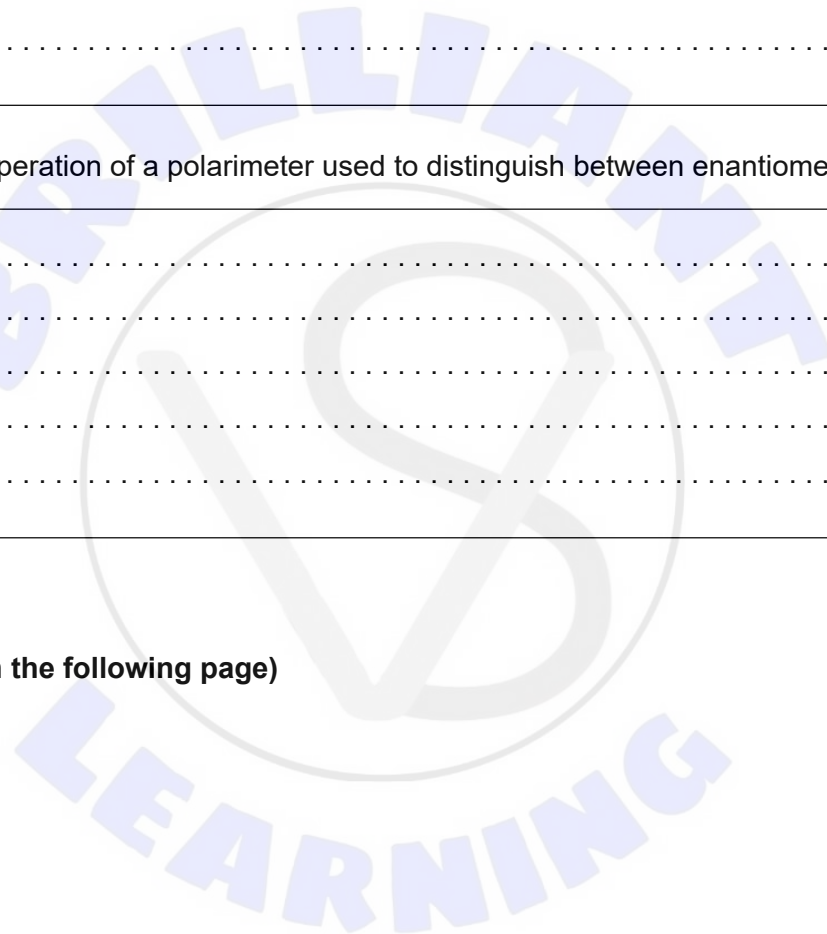
.....

.....

.....

.....

(Option D continues on the following page)



(Option D continued)

26. Technetium-99m, Tc-99m, is a gamma-ray emitter commonly used as a medical tracer. Its half-life is 6.0 hours.

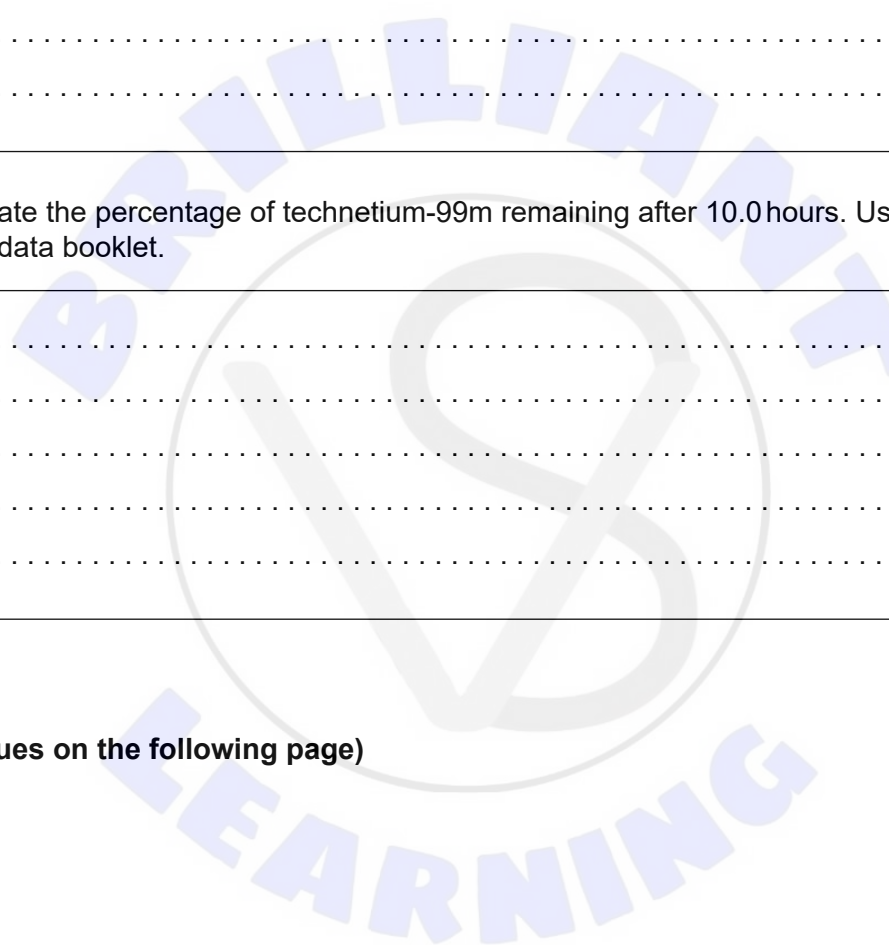
(a) Evaluate the suitability of technetium-99m for this use. [2]

.....
.....
.....
.....
.....
.....

(b) Calculate the percentage of technetium-99m remaining after 10.0 hours. Use section 1 of the data booklet. [2]

.....
.....
.....
.....
.....

(Option D continues on the following page)



(Option D continued)

27. The presence of alcohol in the breath can be detected using a breathalyser.

(a) Describe how a fuel cell breathalyser works. [3]

.....

.....

.....

.....

.....

.....

(b) Alcohol levels in the breath can also be determined using IR spectroscopy.

Suggest, giving a reason, which bond's absorbance is most useful for detecting ethanol in breath. [2]

Bond:

.....

Reason:

.....

.....

.....

End of Option D





Please **do not** write on this page.
Answers written on this page
will not be marked.





Please **do not** write on this page.
Answers written on this page
will not be marked.





Please **do not** write on this page.
Answers written on this page
will not be marked.

