

© International Baccalaureate Organization 2021

All rights reserved. No part of this product may be reproduced in any form or by any electronic or mechanical means, including information storage and retrieval systems, without the prior written permission from the IB. Additionally, the license tied with this product prohibits use of any selected files or extracts from this product. Use by third parties, including but not limited to publishers, private teachers, tutoring or study services, preparatory schools, vendors operating curriculum mapping services or teacher resource digital platforms and app developers, whether fee-covered or not, is prohibited and is a criminal offense.

More information on how to request written permission in the form of a license can be obtained from <https://ibo.org/become-an-ib-school/ib-publishing/licensing/applying-for-a-license/>.

© Organisation du Baccalauréat International 2021

Tous droits réservés. Aucune partie de ce produit ne peut être reproduite sous quelque forme ni par quelque moyen que ce soit, électronique ou mécanique, y compris des systèmes de stockage et de récupération d'informations, sans l'autorisation écrite préalable de l'IB. De plus, la licence associée à ce produit interdit toute utilisation de tout fichier ou extrait sélectionné dans ce produit. L'utilisation par des tiers, y compris, sans toutefois s'y limiter, des éditeurs, des professeurs particuliers, des services de tutorat ou d'aide aux études, des établissements de préparation à l'enseignement supérieur, des fournisseurs de services de planification des programmes d'études, des gestionnaires de plateformes pédagogiques en ligne, et des développeurs d'applications, moyennant paiement ou non, est interdite et constitue une infraction pénale.

Pour plus d'informations sur la procédure à suivre pour obtenir une autorisation écrite sous la forme d'une licence, rendez-vous à l'adresse <https://ibo.org/become-an-ib-school/ib-publishing/licensing/applying-for-a-license/>.

© Organización del Bachillerato Internacional, 2021

Todos los derechos reservados. No se podrá reproducir ninguna parte de este producto de ninguna forma ni por ningún medio electrónico o mecánico, incluidos los sistemas de almacenamiento y recuperación de información, sin la previa autorización por escrito del IB. Además, la licencia vinculada a este producto prohíbe el uso de todo archivo o fragmento seleccionado de este producto. El uso por parte de terceros —lo que incluye, a título enunciativo, editoriales, profesores particulares, servicios de apoyo académico o ayuda para el estudio, colegios preparatorios, desarrolladores de aplicaciones y entidades que presten servicios de planificación curricular u ofrezcan recursos para docentes mediante plataformas digitales—, ya sea incluido en tasas o no, está prohibido y constituye un delito.

En este enlace encontrará más información sobre cómo solicitar una autorización por escrito en forma de licencia: <https://ibo.org/become-an-ib-school/ib-publishing/licensing/applying-for-a-license/>.

Biology
Standard level
Paper 2

Wednesday 19 May 2021 (morning)

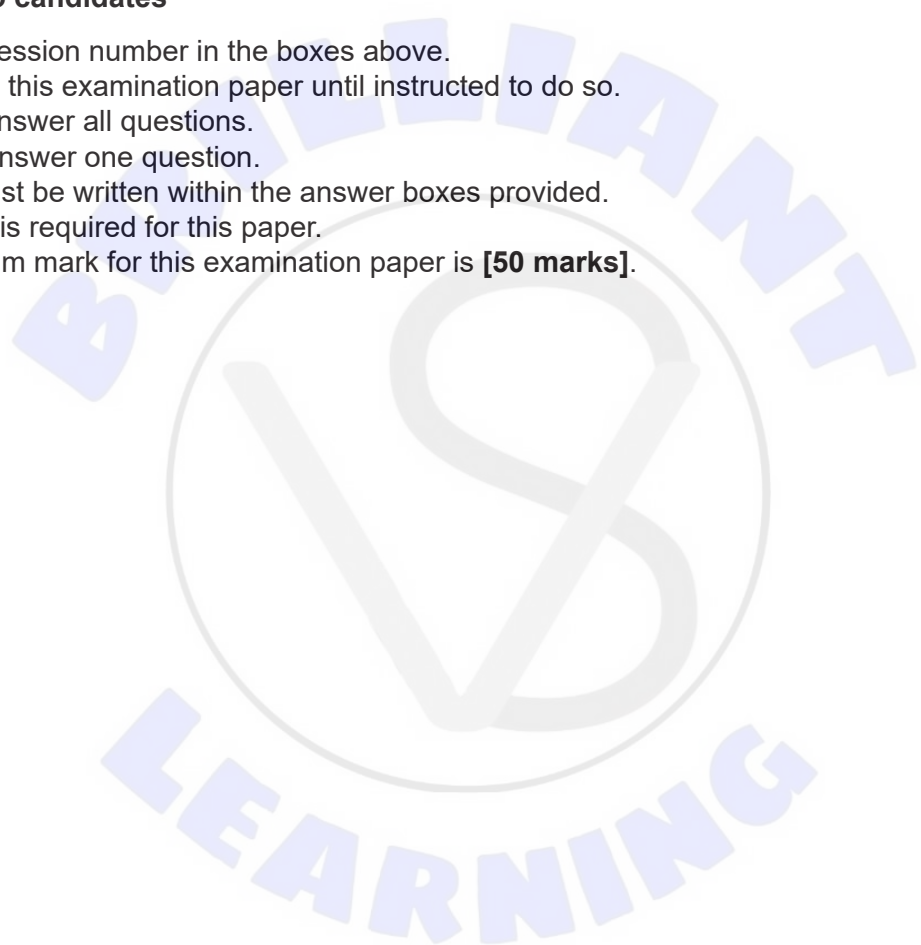
Candidate session number

1 hour 15 minutes

--	--	--	--	--	--	--	--	--	--

Instructions to candidates

- Write your session number in the boxes above.
- Do not open this examination paper until instructed to do so.
- Section A: answer all questions.
- Section B: answer one question.
- Answers must be written within the answer boxes provided.
- A calculator is required for this paper.
- The maximum mark for this examination paper is **[50 marks]**.





Please **do not** write on this page.
Answers written on this page
will not be marked.

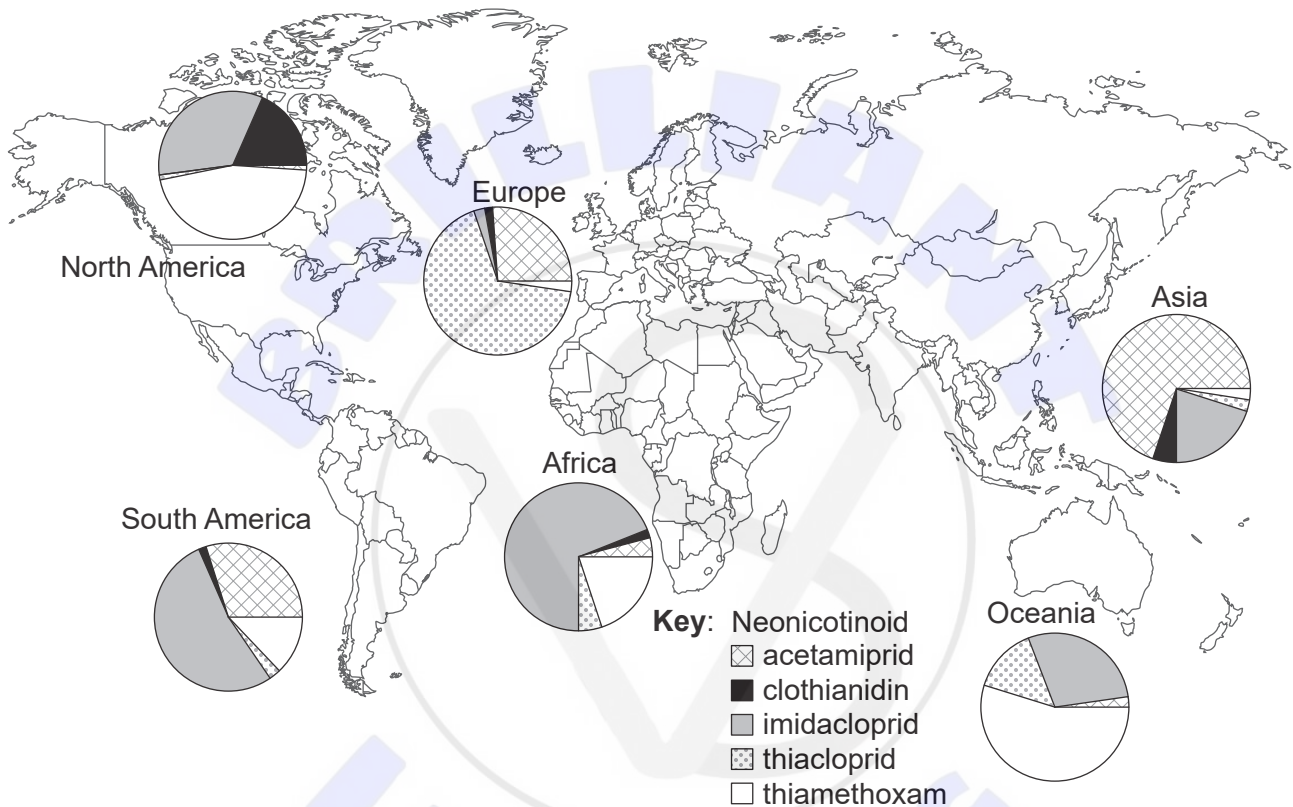


Section A

Answer **all** questions. Answers must be written within the answer boxes provided.

- Honeybees (*Apis mellifera*) are key pollinators in most ecosystems. The worldwide use of neonicotinoid pesticides has caused concern because they may be contributing to the decline of honeybee populations.

Scientists measured the concentration of five neonicotinoids (acetamiprid, clothianidin, imidacloprid, thiacloprid and thiamethoxam) in honey samples from 198 different locations across the world. Each pie chart shows the relative frequency of neonicotinoids in honey samples from a continent.



[Source: Republished with permission of American Association for the Advancement of Science, from A worldwide survey of neonicotinoids in honey, Mitchell, E.A., et al., *Science*, Volume 358, Issue 6359, 2017. Permission conveyed through Copyright Clearance Center, Inc. <https://science.sciencemag.org/content/358/6359/109.full>.]

- Identify in which continent the fewest types of neonicotinoid were detected in honey samples. [1]

.....

- Using the data, outline the different use of thiamethoxam in North and South America. [1]

.....

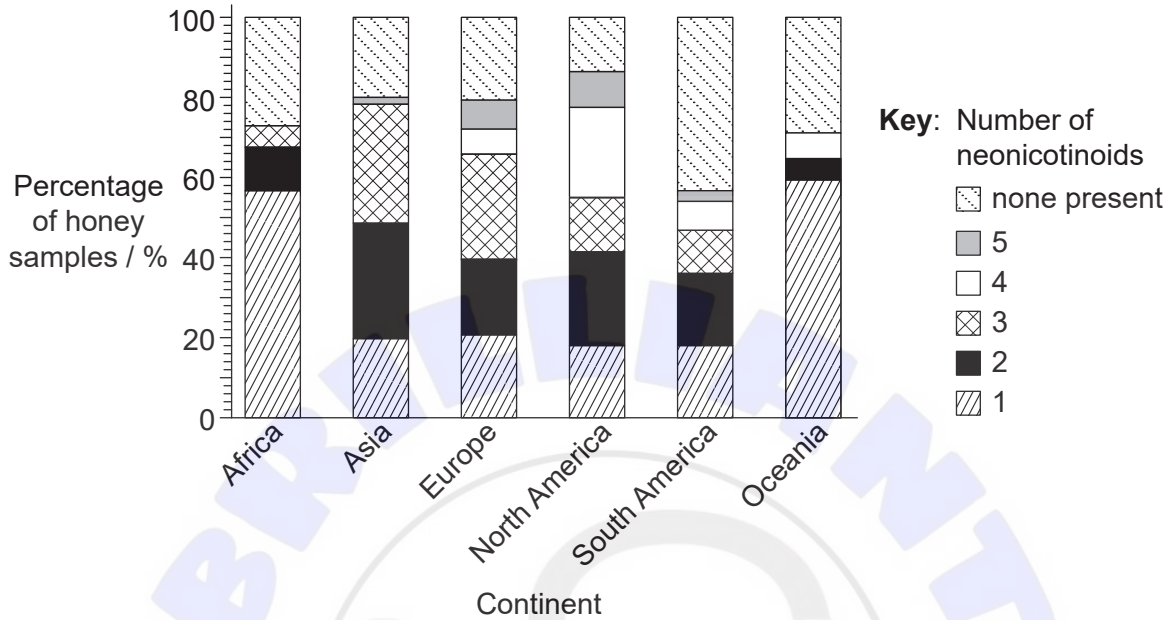
.....

(This question continues on the following page)



(Question 1 continued)

The neonicotinoids can be used alone or together with other neonicotinoids. The percentage of honey samples with 0, 1, 2, 3, 4 or 5 different neonicotinoids in each continent are shown in the stacked bar chart.



[Source: Republished with permission of American Association for the Advancement of Science, from A worldwide survey of neonicotinoids in honey, Mitchell, E.A., et al., *Science*, Volume 358, Issue 6359, 2017. Permission conveyed through Copyright Clearance Center, Inc. <https://science.sciencemag.org/content/358/6359/109.full>.]

(c) Identify the total percentage of honey samples contaminated with neonicotinoid pesticides in the continent with the lowest overall levels of contamination. [1]

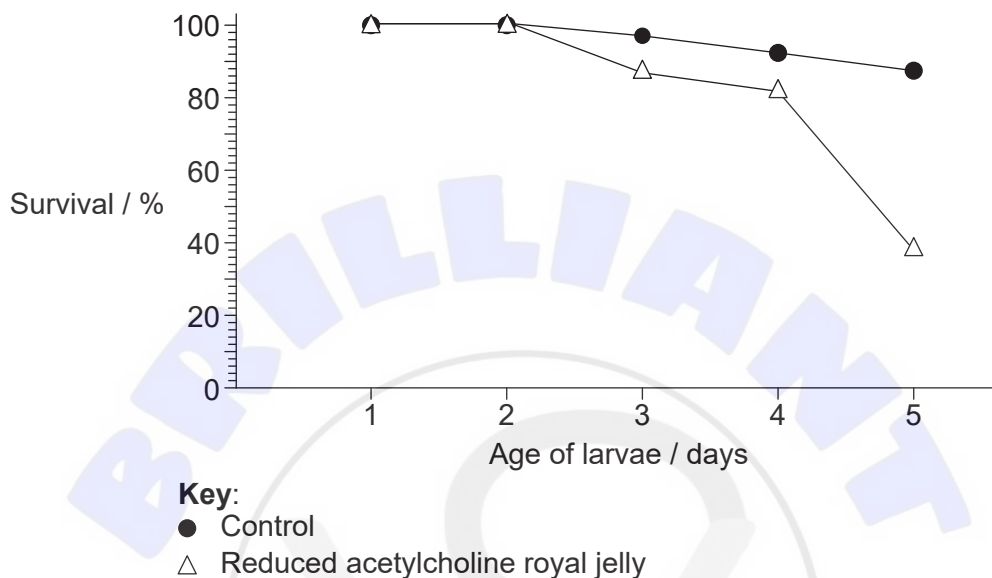
..... %

(This question continues on the following page)

(Question 1 continued)

In order to grow, honeybee larvae are fed royal jelly, a high energy food with very high acetylcholine concentrations.

In an experiment, larvae were bred artificially on a diet with reduced acetylcholine content in the royal jelly. The graph shows the mean survival rate of these larvae compared to control larvae fed on a normal diet.



(d) Deduce the conclusions that can be drawn from the data in the graph. [2]

.....

.....

.....

.....

(e) Suggest a reason for the effect of a diet reduced in acetylcholine on the larval survival rate. [1]

.....

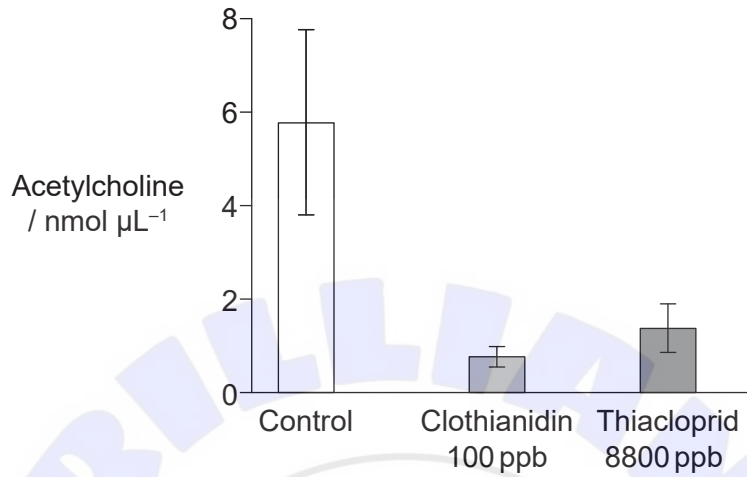
.....

(This question continues on the following page)



(Question 1 continued)

The concentration of acetylcholine was measured in royal jelly produced by honeybees that had never been exposed to neonicotinoids (control) and honeybees that had been exposed for three weeks to two neonicotinoids; clothianidin and thiacloprid.



(f) Compare and contrast the effect of clothianidin and thiacloprid treatments on the concentration of acetylcholine in royal jelly.

[2]

.....

.....

.....

.....

(g) Explain how neonicotinoids affect synaptic transmission in insects.

[3]

.....

.....

.....

.....

.....

.....

(This question continues on the following page)



(Question 1 continued)

- (h) Companies that manufacture neonicotinoid pesticides have argued that they do not cause significant harm to honeybees. Construct an argument, based on the data in this question, for serious concern about the manufacture and use of neonicotinoid pesticides. [4]

.....

.....

.....

.....

.....

.....

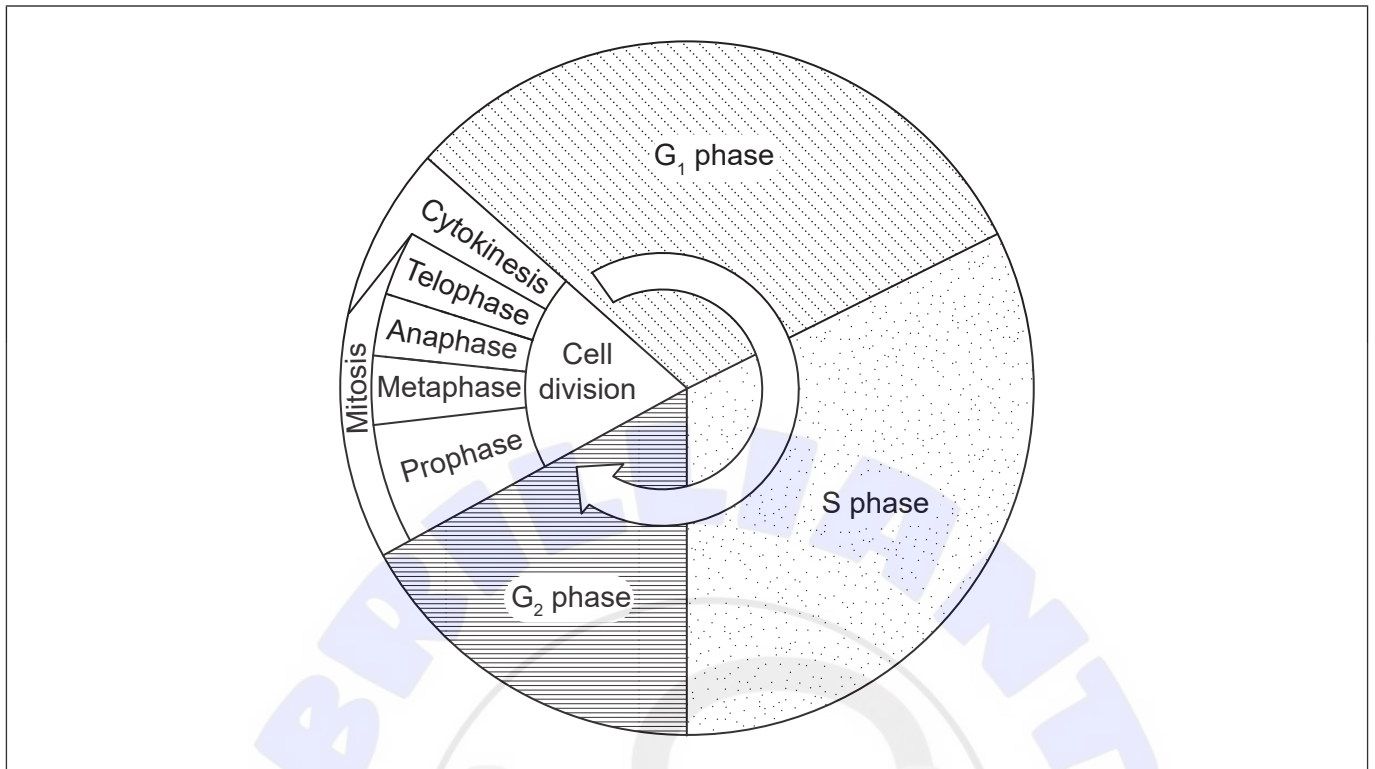
.....

.....

.....



2. The diagram shows the stages in the cell cycle.



(a) State processes occurring during interphase. [2]

.....

(b) (i) Using the letter C, label the stage on the diagram where chromosome supercoiling occurs. [1]

(ii) Using the letter M, label the stage on the diagram where sister chromatids migrate to opposite poles. [1]

(c) Distinguish between the outcomes of a cell dividing either by mitosis or meiosis. [2]

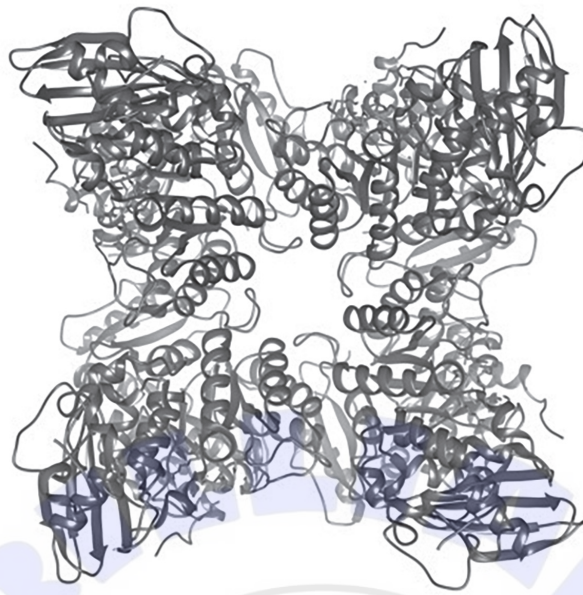
.....
.....
.....

(d) The mitotic index is an important prognostic tool for predicting the response of cancer cells to chemotherapy. Outline how the mitotic index is calculated. [1]

.....
.....



3. The image represents the structure of the enzyme Rubisco from common pea (*Pisum sativum*).



(a) State **one** function of Rubisco. [1]

.....

(b) State a role of the active site of an enzyme. [1]

.....
.....

(c) State the genus of the plant where this Rubisco is found. [1]

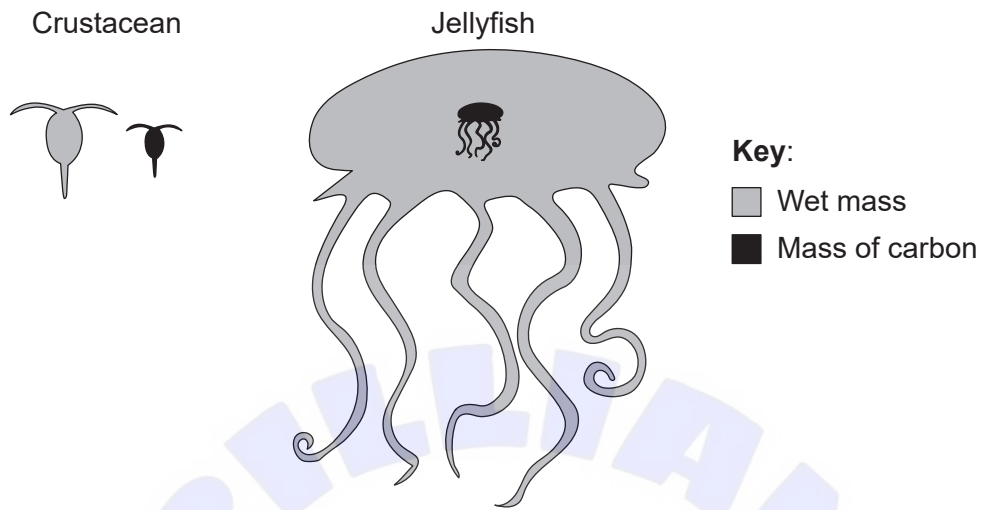
.....

(d) Outline **one** factor that could affect the activity of Rubisco. [2]

.....
.....
.....
.....



4. The mass of an individual organism can affect its physiology and feeding ecology. The diagram shows the relative mass of carbon (black) and total wet mass (grey) of a marine crustacean, *Calanus hyperboreus* and a jellyfish, *Bathocyroe fosteri*.



[Source: Kristian McConville, Angus Atkinson, Elaine S. Fileman, John I. Spicer, Andrew G. Hirst. Disentangling the counteracting effects of water content and carbon mass on zooplankton growth. *Journal of Plankton Research*. 2017, Volume 39, Issue 2, Pages 246–256. <https://doi.org/10.1093/plankt/fbw094>. Adapted (and translated) by permission of Oxford University Press.]

- (a) State **one** process that results in the loss of carbon dioxide from a marine organism such as a crustacean or a jellyfish. [1]

.....

- (b) The crustacean and the jellyfish obtain carbon compounds by feeding. State **one** source of carbon for marine organisms, other than feeding. [1]

.....
.....

- (c) Explain how energy enters, flows through and is lost from marine food chains. [3]

.....
.....
.....
.....
.....
.....

(This question continues on the following page)



(Question 4 continued)

(d) (i) Deduce whether jellyfish or crustacea are a richer source of carbon in a food chain. [1]

.....
.....

(ii) Suggest with a reason whether having a large body mass is an advantage or disadvantage for jellyfish. [1]

.....
.....



Section B

Answer **one** question. Up to one additional mark is available for the construction of your answer. Answers must be written within the answer boxes provided.

5. Pastry cream or confectioners' custard is made with a combination of milk (rich in casein and lactose), egg yolks, sugar, starch and a flavouring such as vanilla.
- (a) Describe the structure of starch. [5]
 - (b) Explain how amino acids in casein could reach the liver, starting from the moment when the person takes a bite of pastry cream pie. [7]
 - (c) Congenital lactase deficiency is a type of lactose intolerance that occurs in infants. It is inherited in an autosomal recessive pattern. Calculate the chance of congenital lactose intolerance in a child whose parents are both carriers for the disorder, showing fully how you reached your answer. [3]
6. Tuberculosis (TB) is an infectious disease caused by the bacterium *Mycobacterium tuberculosis*.
- (a) Outline the structures in *M. tuberculosis* that are not present in a human cell. [3]
 - (b) Explain the production of antibodies when a patient is infected with the TB bacterium. [7]
 - (c) Describe the risk to the human population of indiscriminate use of antibiotics. [5]



